

## Product datasheet for **TA311718**

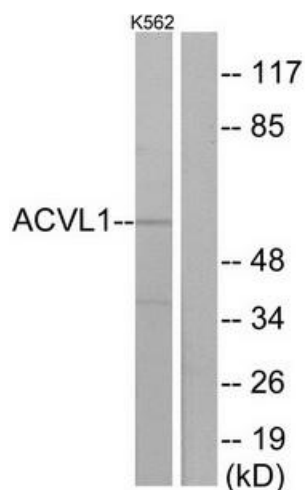
### ACVRL1 Rabbit Polyclonal Antibody

#### Product data:

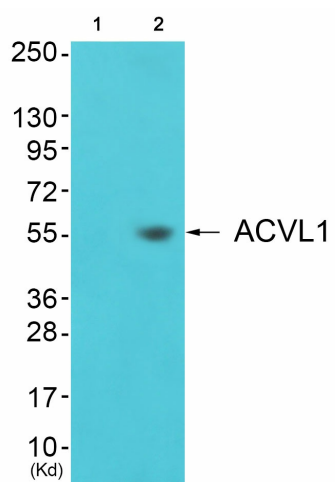
Product Type:	Primary Antibodies
Applications:	IF, IHC, WB
Recommended Dilution:	WB: 1:500~1:3000, IHC: 1:50~1:100, IF: 1:100~1:500, ELISA: 1:20000
Reactivity:	Human, Mouse, Rat
Host:	Rabbit
Isotype:	IgG
Clonality:	Polyclonal
Immunogen:	The antiserum was produced against synthesized peptide derived from internal of human ACVL1.
Formulation:	Phosphate buffered saline (without Mg <sup>2+</sup> and Ca <sup>2+</sup> ), pH 7.4, 150mM NaCl, 0.02% sodium azide and 50% glycerol.
Concentration:	lot specific
Purification:	The antibody was affinity-purified from rabbit antiserum by affinity-chromatography using epitope-specific immunogen.
Conjugation:	Unconjugated
Storage:	Store at -20°C as received.
Stability:	Stable for 12 months from date of receipt.
Gene Name:	activin A receptor like type 1
Database Link:	<a href="#">NP_000011</a> <a href="#">Entrez Gene 11482 Mouse</a> <a href="#">Entrez Gene 25237 Rat</a> <a href="#">Entrez Gene 94 Human</a> <a href="#">P37023</a>
Synonyms:	ACVRLK1; ALK-1; ALK1; HHT; HHT2; ORW2; SKR3; TSR-I
Note:	ACVL1 antibody detects endogenous levels of total ACVL1 protein.
Protein Families:	Druggable Genome, Protein Kinase, Transmembrane
Protein Pathways:	Cytokine-cytokine receptor interaction, TGF-beta signaling pathway



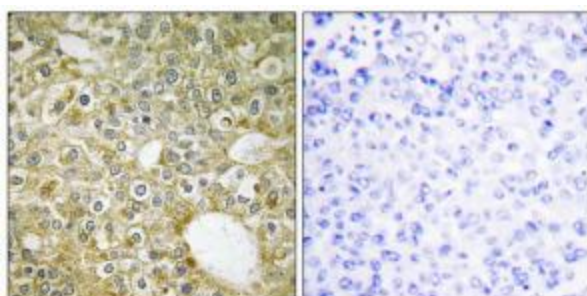
[View online »](#)

**Product images:**


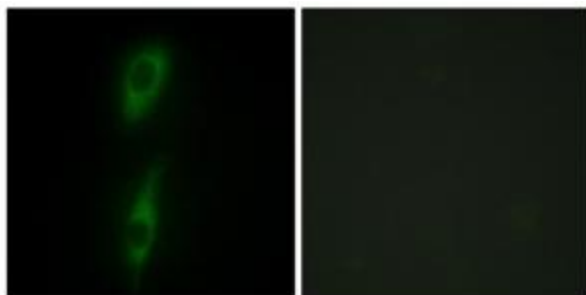
Western blot analysis of extracts from K562 cells, using ACVRL1 antibody. The lane on the right is treated with the synthesized peptide.



Western blot analysis of extracts from 3T3 cells (Lane 2), using ACVRL1 Antibody. The lane on the left is treated with synthesized peptide.



Immunohistochemistry analysis of paraffin-embedded human breast carcinoma tissue using ACVRL1 antibody. The picture on the right is treated with the synthesized peptide.



Immunofluorescence analysis of HeLa cells, using ACVRL1 antibody. The picture on the right is treated with the synthesized peptide.