

Product datasheet for **TA311717**

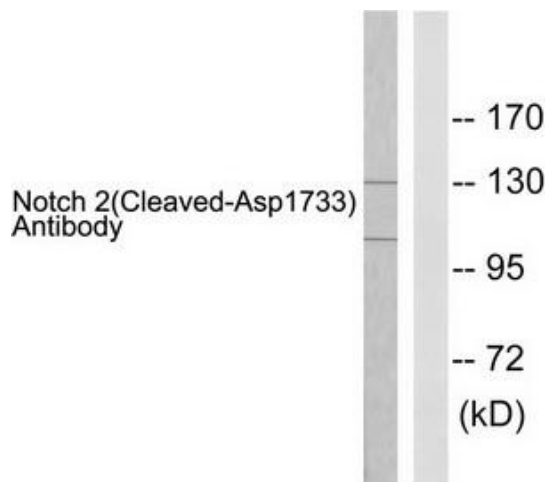
NOTCH2 Rabbit Polyclonal Antibody

Product data:

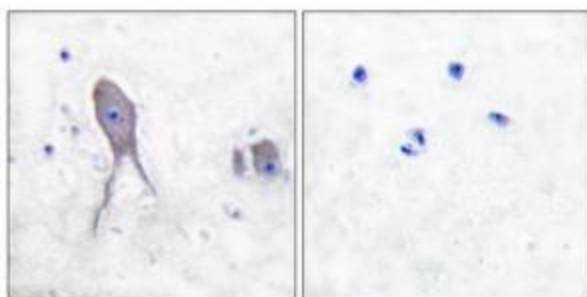
Product Type:	Primary Antibodies
Applications:	IHC, WB
Recommended Dilution:	WB: 1:300~1:1000, IHC: 1:50~1:100, ELISA: 1:40000
Reactivity:	Human, Mouse, Rat
Host:	Rabbit
Isotype:	IgG
Clonality:	Polyclonal
Immunogen:	The antiserum was produced against synthesized peptide derived from human Notch 2.
Formulation:	Phosphate buffered saline (without Mg ²⁺ and Ca ²⁺), pH 7.4, 150mM NaCl, 0.02% sodium azide and 50% glycerol.
Concentration:	lot specific
Purification:	The antibody was affinity-purified from rabbit antiserum by affinity-chromatography using epitope-specific immunogen.
Conjugation:	Unconjugated
Storage:	Store at -20°C as received.
Stability:	Stable for 12 months from date of receipt.
Gene Name:	notch 2
Database Link:	NP_077719 Entrez Gene 18129 Mouse Entrez Gene 29492 Rat Entrez Gene 4853 Human Q04721
Synonyms:	AGS2; HJCYS; hN2
Note:	Notch 2 (cleaved-Asp1733) antibody detects endogenous levels of fragment of activated Notch 2 resulting from cleavage adjacent to Asp1733.
Protein Families:	Druggable Genome, Transmembrane
Protein Pathways:	Dorso-ventral axis formation, Notch signaling pathway



[View online »](#)

Product images:

Western blot analysis of extracts from 293 cells treated with TNF- α (20ng/ml, 30mins), using Notch 2 (cleaved-Asp1733) antibody. The lane on the right is treated with the synthesized peptide.



Immunohistochemical analysis of paraffin-embedded human brain tissue using Notch 2 (cleaved-Asp1733) antibody. The picture on the right is treated with the synthesized peptide.