

Product datasheet for **TA311714**

Frizzled 5 (FZD5) Rabbit Polyclonal Antibody

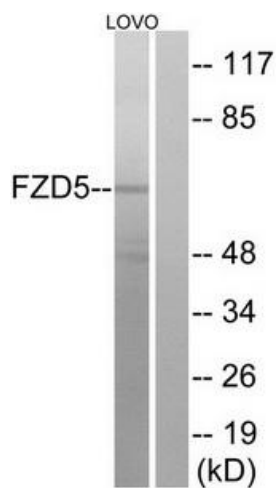
Product data:

Product Type:	Primary Antibodies
Applications:	IF, WB
Recommended Dilution:	WB: 1:500~1:3000, IF: 1:100~1:500, ELISA: 1:20000
Reactivity:	Human, Mouse, Rat
Host:	Rabbit
Isotype:	IgG
Clonality:	Polyclonal
Immunogen:	The antiserum was produced against synthesized peptide derived from internal of human FZD5.
Formulation:	Phosphate buffered saline (without Mg ²⁺ and Ca ²⁺), pH 7.4, 150mM NaCl, 0.02% sodium azide and 50% glycerol.
Concentration:	lot specific
Purification:	The antibody was affinity-purified from rabbit antiserum by affinity-chromatography using epitope-specific immunogen.
Conjugation:	Unconjugated
Storage:	Store at -20°C as received.
Stability:	Stable for 12 months from date of receipt.
Gene Name:	frizzled class receptor 5
Database Link:	NP_003459 Entrez Gene 14367 MouseEntrez Gene 317674 RatEntrez Gene 7855 Human Q13467
Synonyms:	C2orf31; HFZ5
Note:	FZD5 antibody detects endogenous levels of total FZD5 protein.
Protein Families:	Druggable Genome, GPCR, Transmembrane
Protein Pathways:	Basal cell carcinoma, Colorectal cancer, Melanogenesis, Pathways in cancer, Wnt signaling pathway

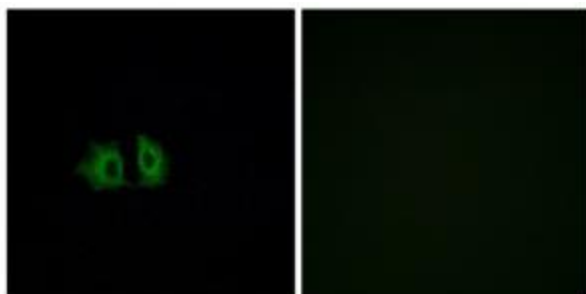


[View online »](#)

Product images:



Western blot analysis of extracts from LOVO cells, using FZD5 antibody. The lane on the right is treated with the synthesized peptide.



Immunofluorescence analysis of A549 cells, using FZD5 antibody. The picture on the right is treated with the synthesized peptide.