

## Product datasheet for **TA311713**

### GPR18 Rabbit Polyclonal Antibody

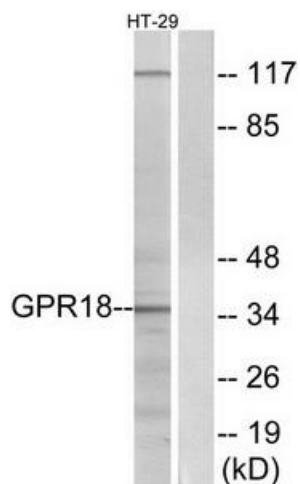
#### Product data:

|                       |  |
|-----------------------|--|
| Product Type:         | Primary Antibodies   |
| Applications:         | IF, WB   |
| Recommended Dilution: | WB: 1:500~1:3000, IF: 1:100~1:500, ELISA: 1:10000  |
| Reactivity:           | Human  |
| Host:                 | Rabbit   |
| Isotype:              | IgG  |
| Clonality:            | Polyclonal   |
| Immunogen:            | The antiserum was produced against synthesized peptide derived from internal of human GPR18.   |
| Formulation:          | Phosphate buffered saline (without Mg <sup>2+</sup> and Ca <sup>2+</sup> ), pH 7.4, 150mM NaCl, 0.02% sodium azide and 50% glycerol. |
| Concentration:        | lot specific   |
| Purification:         | The antibody was affinity-purified from rabbit antiserum by affinity-chromatography using epitope-specific immunogen.                |
| Conjugation:          | Unconjugated   |
| Storage:              | Store at -20°C as received.  |
| Stability:            | Stable for 12 months from date of receipt.   |
| Gene Name:            | G protein-coupled receptor 18  |
| Database Link:        | <a href="#">NP_001091670</a><br><a href="#">Entrez Gene 2841 Human</a><br><a href="#">Q14330</a>                                     |
| Synonyms:             | G protein-coupled receptor 18; OTTHUMP00000018613  |
| Note:                 | GPR18 antibody detects endogenous levels of total GPR18 protein.   |
| Protein Families:     | Druggable Genome, GPCR, Transmembrane  |

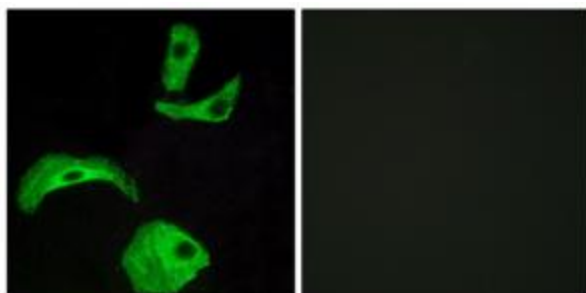


[View online »](#)

## Product images:



Western blot analysis of extracts from HT-29 cells, using GPR18 antibody. The lane on the right is treated with the synthesized peptide.



Immunofluorescence analysis of HeLa cells, using GPR18 antibody. The picture on the right is treated with the synthesized peptide.