

## Product datasheet for **TA311710**

### PEX11B Rabbit Polyclonal Antibody

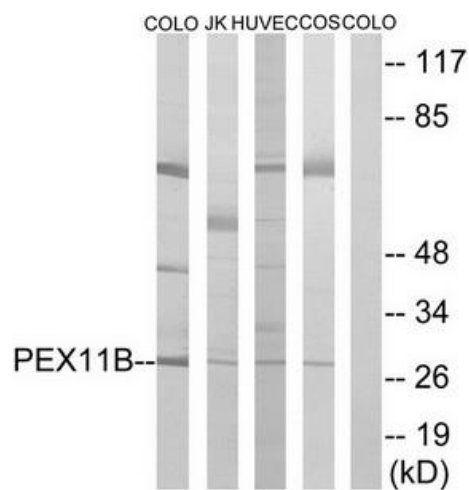
#### Product data:

Product Type:	Primary Antibodies
Applications:	WB
Recommended Dilution:	WB: 1:500~1:3000, ELISA: 1:10000
Reactivity:	Human, Mouse, Rat
Host:	Rabbit
Isotype:	IgG
Clonality:	Polyclonal
Immunogen:	The antiserum was produced against synthesized peptide derived from internal of human PEX11B.
Formulation:	Phosphate buffered saline (without Mg <sup>2+</sup> and Ca <sup>2+</sup> ), pH 7.4, 150mM NaCl, 0.02% sodium azide and 50% glycerol.
Concentration:	lot specific
Purification:	The antibody was affinity-purified from rabbit antiserum by affinity-chromatography using epitope-specific immunogen.
Conjugation:	Unconjugated
Storage:	Store at -20°C as received.
Stability:	Stable for 12 months from date of receipt.
Gene Name:	peroxisomal biogenesis factor 11 beta
Database Link:	<a href="#">NP_003837</a> <a href="#">Entrez Gene 18632 MouseEntrez Gene 310682 RatEntrez Gene 8799 Human O96011</a>
Synonyms:	PEX11-BETA; PEX14B
Note:	PEX11B antibody detects endogenous levels of total PEX11B protein.
Protein Families:	Transmembrane



[View online »](#)

## Product images:



Western blot analysis of extracts from COLO cells, Jurkat cells, HUVEC cells and COS-7 cells, using PEX11B antibody. The lane on the right is treated with the synthesized peptide.