

## Product datasheet for **TA311708**

### TRP2 (DCT) Rabbit Polyclonal Antibody

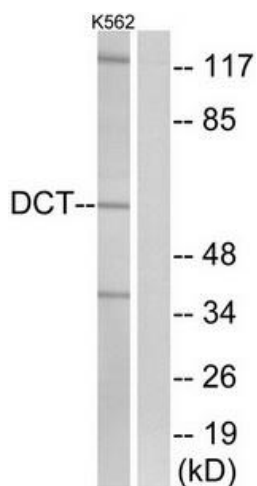
#### Product data:

Product Type:	Primary Antibodies
Applications:	IF, WB
Recommended Dilution:	WB: 1:500~1:3000, IF: 1:100~1:500, ELISA: 1:40000
Reactivity:	Human, Mouse
Host:	Rabbit
Isotype:	IgG
Clonality:	Polyclonal
Immunogen:	The antiserum was produced against synthesized peptide derived from internal of human DCT.
Formulation:	Phosphate buffered saline (without Mg <sup>2+</sup> and Ca <sup>2+</sup> ), pH 7.4, 150mM NaCl, 0.02% sodium azide and 50% glycerol.
Concentration:	lot specific
Purification:	The antibody was affinity-purified from rabbit antiserum by affinity-chromatography using epitope-specific immunogen.
Conjugation:	Unconjugated
Storage:	Store at -20°C as received.
Stability:	Stable for 12 months from date of receipt.
Gene Name:	dopachrome tautomerase
Database Link:	<a href="#">NP_001123361</a> <a href="#">Entrez Gene 13190 Mouse</a> <a href="#">Entrez Gene 1638 Human</a> <a href="#">P40126</a>
Synonyms:	TRP-2; TYRP2
Note:	DCT antibody detects endogenous levels of total DCT protein.
Protein Families:	Transmembrane
Protein Pathways:	Melanogenesis, Metabolic pathways, Tyrosine metabolism

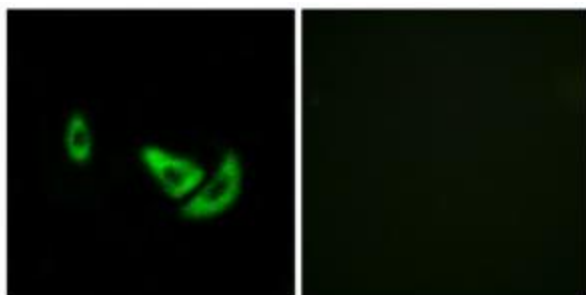


[View online »](#)

## Product images:



Western blot analysis of extracts from K562 cells, using DCT antibody. The lane on the right is treated with the synthesized peptide.



Immunofluorescence analysis of A549 cells, using DCT antibody. The picture on the right is treated with the synthesized peptide.