

## Product datasheet for **TA311706**

### Claudin 6 (CLDN6) Rabbit Polyclonal Antibody

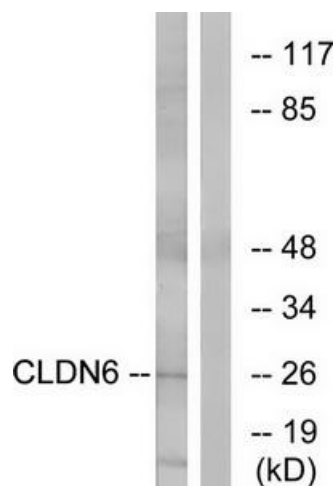
#### Product data:

Product Type:	Primary Antibodies
Applications:	IF, IHC, WB
Recommended Dilution:	WB: 1:500~1:3000, IHC: 1:50~1:100, IF: 1:100~1:500, ELISA: 1:40000
Reactivity:	Human
Host:	Rabbit
Isotype:	IgG
Clonality:	Polyclonal
Immunogen:	The antiserum was produced against synthesized peptide derived from internal of human CLDN6.
Formulation:	Phosphate buffered saline (without Mg <sup>2+</sup> and Ca <sup>2+</sup> ), pH 7.4, 150mM NaCl, 0.02% sodium azide and 50% glycerol.
Concentration:	lot specific
Purification:	The antibody was affinity-purified from rabbit antiserum by affinity-chromatography using epitope-specific immunogen.
Conjugation:	Unconjugated
Storage:	Store at -20°C as received.
Stability:	Stable for 12 months from date of receipt.
Gene Name:	claudin 6
Database Link:	<a href="#">NP_067018</a> <a href="#">Entrez Gene 9074 Human</a> <a href="#">P56747</a>
Synonyms:	claudin 6; OTTHUMP00000159248
Note:	CLDN6 antibody detects endogenous levels of total CLDN6 protein.
Protein Families:	Transmembrane
Protein Pathways:	Cell adhesion molecules (CAMs), Leukocyte transendothelial migration, Tight junction

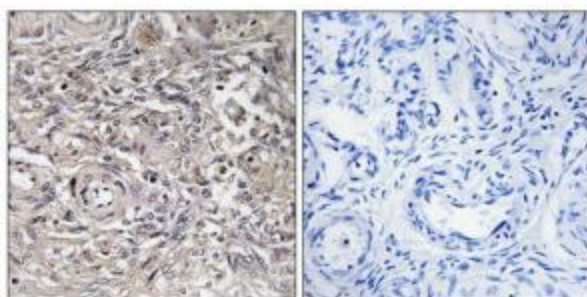


[View online »](#)

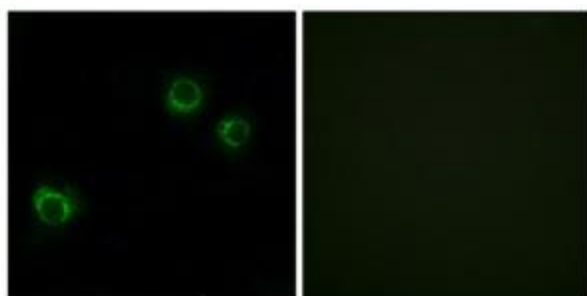
Product images:



Western blot analysis of extracts from Jurkat cells, using CLDN6 antibody. The lane on the right is treated with the synthesized peptide.



Immunohistochemistry analysis of paraffin-embedded human ovary tissue using CLDN6 antibody. The picture on the right is treated with the synthesized peptide.



Immunofluorescence analysis of HUVEC cells, using CLDN6 antibody. The picture on the right is treated with the synthesized peptide.