

Product datasheet for **TA311703**

RPS9 Rabbit Polyclonal Antibody

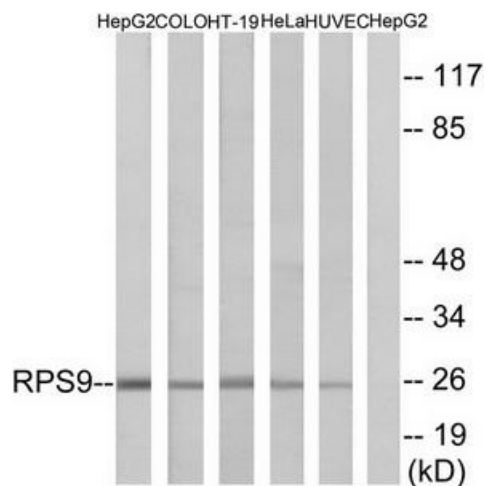
Product data:

Product Type:	Primary Antibodies
Applications:	IF, WB
Recommended Dilution:	WB: 1:500~1:3000, IF: 1:100~1:500, ELISA: 1:20000
Reactivity:	Human, Mouse, Rat
Host:	Rabbit
Isotype:	IgG
Clonality:	Polyclonal
Immunogen:	The antiserum was produced against synthesized peptide derived from internal of human RPS9.
Formulation:	Phosphate buffered saline (without Mg ²⁺ and Ca ²⁺), pH 7.4, 150mM NaCl, 0.02% sodium azide and 50% glycerol.
Concentration:	lot specific
Purification:	The antibody was affinity-purified from rabbit antiserum by affinity-chromatography using epitope-specific immunogen.
Conjugation:	Unconjugated
Storage:	Store at -20°C as received.
Stability:	Stable for 12 months from date of receipt.
Gene Name:	ribosomal protein S9
Database Link:	NP_001004 Entrez Gene 76846 Mouse Entrez Gene 81772 Rat Entrez Gene 6203 Human P46781
Synonyms:	S9
Note:	RPS9 antibody detects endogenous levels of total RPS9 protein.
Protein Pathways:	Ribosome

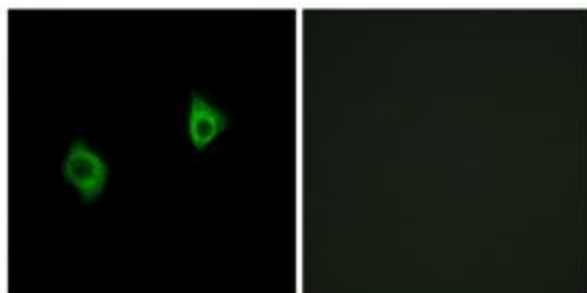


[View online »](#)

Product images:



Western blot analysis of extracts from HepG2 cells, COLO cells, HT-29 cells, HeLa cells and HUVEC cells, using RPS9 antibody. The lane on the right is treated with the synthesized peptide.



Immunofluorescence analysis of A549 cells, using RPS9 antibody. The picture on the right is treated with the synthesized peptide.