

Product datasheet for **TA311702**

TRAF3IP3 Rabbit Polyclonal Antibody

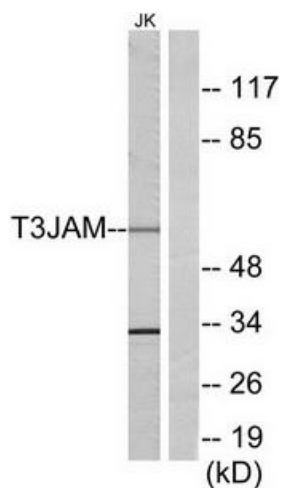
Product data:

Product Type:	Primary Antibodies
Applications:	IF, WB
Recommended Dilution:	WB: 1:500~1:3000, IF: 1:100~1:500, ELISA: 1:20000
Reactivity:	Human, Mouse, Rat
Host:	Rabbit
Isotype:	IgG
Clonality:	Polyclonal
Immunogen:	The antiserum was produced against synthesized peptide derived from internal of human T3JAM.
Formulation:	Phosphate buffered saline (without Mg ²⁺ and Ca ²⁺), pH 7.4, 150mM NaCl, 0.02% sodium azide and 50% glycerol.
Concentration:	lot specific
Purification:	The antibody was affinity-purified from rabbit antiserum by affinity-chromatography using epitope-specific immunogen.
Conjugation:	Unconjugated
Storage:	Store at -20°C as received.
Stability:	Stable for 12 months from date of receipt.
Gene Name:	TRAF3 interacting protein 3
Database Link:	NP_079504 Entrez Gene 215243 MouseEntrez Gene 360900 RatEntrez Gene 80342 Human Q9Y228
Synonyms:	T3JAM
Note:	T3JAM antibody detects endogenous levels of total T3JAM protein.
Protein Families:	Druggable Genome, Transmembrane

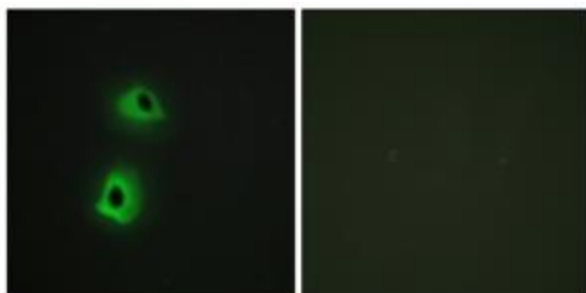


[View online »](#)

Product images:



Western blot analysis of extracts from 293 cells, using T3JAM antibody. The lane on the right is treated with the synthesized peptide.



Immunofluorescence analysis of HeLa cells, using T3JAM antibody. The picture on the right is treated with the synthesized peptide.