

Product datasheet for **TA311701**

Cytochrome b5 (CYB5A) Rabbit Polyclonal Antibody

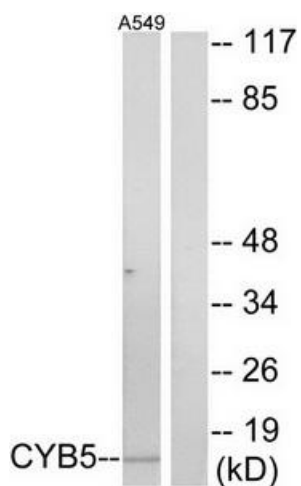
Product data:

Product Type:	Primary Antibodies
Applications:	IF, WB
Recommended Dilution:	WB: 1:500~1:3000, IF: 1:100~1:500, ELISA: 1:5000
Reactivity:	Human, Mouse, Rat
Host:	Rabbit
Isotype:	IgG
Clonality:	Polyclonal
Immunogen:	The antiserum was produced against synthesized peptide derived from internal of human CYB5.
Formulation:	Phosphate buffered saline (without Mg ²⁺ and Ca ²⁺), pH 7.4, 150mM NaCl, 0.02% sodium azide and 50% glycerol.
Concentration:	lot specific
Purification:	The antibody was affinity-purified from rabbit antiserum by affinity-chromatography using epitope-specific immunogen.
Conjugation:	Unconjugated
Storage:	Store at -20°C as received.
Stability:	Stable for 12 months from date of receipt.
Gene Name:	cytochrome b5 type A
Database Link:	NP_001177736 Entrez Gene 64001 Rat Entrez Gene 109672 Mouse Entrez Gene 1528 Human P00167
Synonyms:	CYB5; MCB5
Note:	CYB5 antibody detects endogenous levels of total CYB5 protein.
Protein Families:	Transmembrane

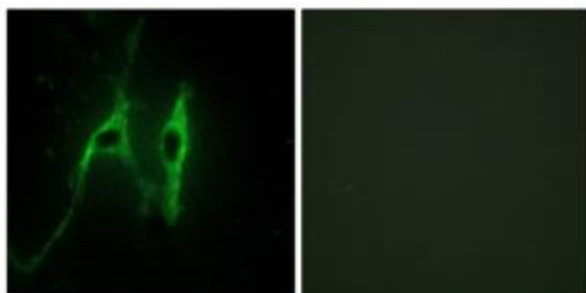


[View online »](#)

Product images:



Western blot analysis of extracts from A549 cells, using CYB5 antibody. The lane on the right is treated with the synthesized peptide.



Immunofluorescence analysis of NIH/3T3 cells, using CYB5 antibody. The picture on the right is treated with the synthesized peptide.