

Product datasheet for **TA311700**

CYP2S1 Rabbit Polyclonal Antibody

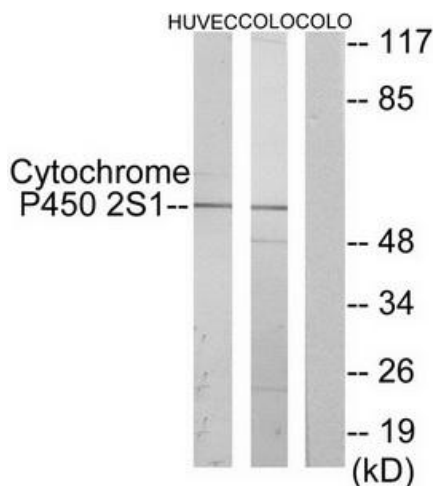
Product data:

| | |
|-----------------------|--|
| Product Type: | Primary Antibodies |
| Applications: | IF, IHC, WB |
| Recommended Dilution: | WB: 1:500~1:3000, IHC: 1:50~1:100, IF: 1:100~1:500, ELISA: 1:5000 |
| Reactivity: | Human, Mouse |
| Host: | Rabbit |
| Isotype: | IgG |
| Clonality: | Polyclonal |
| Immunogen: | The antiserum was produced against synthesized peptide derived from internal of human Cytochrome P450 2S1. |
| Formulation: | Phosphate buffered saline (without Mg ²⁺ and Ca ²⁺), pH 7.4, 150mM NaCl, 0.02% sodium azide and 50% glycerol. |
| Concentration: | lot specific |
| Purification: | The antibody was affinity-purified from rabbit antiserum by affinity-chromatography using epitope-specific immunogen. |
| Conjugation: | Unconjugated |
| Storage: | Store at -20°C as received. |
| Stability: | Stable for 12 months from date of receipt. |
| Gene Name: | cytochrome P450 family 2 subfamily S member 1 |
| Database Link: | NP_085125 Entrez Gene 74134 Mouse Entrez Gene 29785 Human Q96SQ9 |
| Synonyms: | CYPIIS1 |
| Note: | Cytochrome P450 2S1 antibody detects endogenous levels of total Cytochrome P450 2S1 protein. |
| Protein Families: | Druggable Genome, P450, Transmembrane |
| Protein Pathways: | Metabolism of xenobiotics by cytochrome P450 |

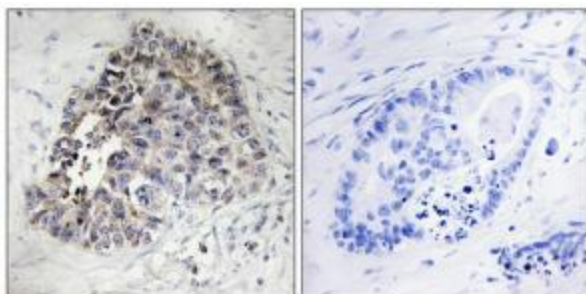


[View online »](#)

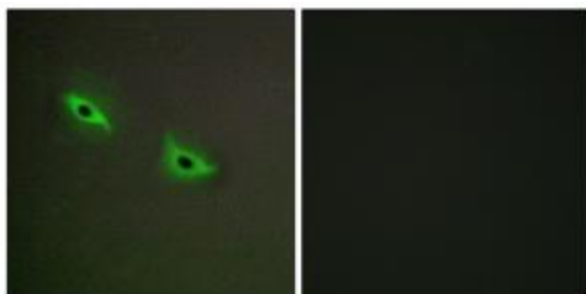
Product images:



Western blot analysis of extracts from HUVEC cells and COLO cells, using Cytochrome P450 2S1 antibody. The lane on the right is treated with the synthesized peptide.



Immunohistochemistry analysis of paraffin-embedded human lung carcinoma tissue using Cytochrome P450 2S1 antibody. The picture on the right is treated with the synthesized peptide.



Immunofluorescence analysis of A549 cells, using Cytochrome P450 2S1 antibody. The picture on the right is treated with the synthesized peptide.