

Product datasheet for **TA311699**

CYP26A1 Rabbit Polyclonal Antibody

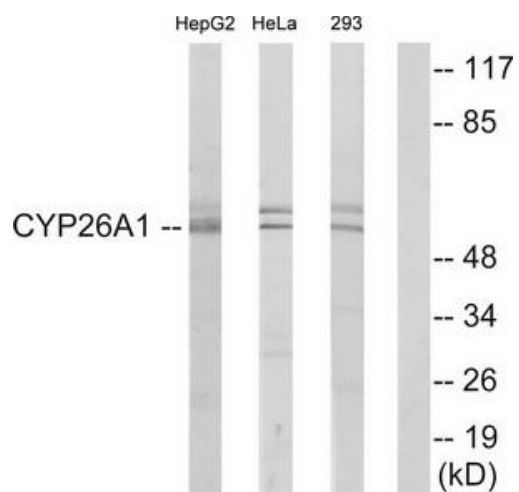
Product data:

Product Type:	Primary Antibodies
Applications:	WB
Recommended Dilution:	WB: 1:500~1:3000, ELISA: 1:20000
Reactivity:	Human, Mouse, Rat
Host:	Rabbit
Isotype:	IgG
Clonality:	Polyclonal
Immunogen:	The antiserum was produced against synthesized peptide derived from internal of human Cytochrome P450 26A1.
Formulation:	Phosphate buffered saline (without Mg ²⁺ and Ca ²⁺), pH 7.4, 150mM NaCl, 0.02% sodium azide and 50% glycerol.
Concentration:	lot specific
Purification:	The antibody was affinity-purified from rabbit antiserum by affinity-chromatography using epitope-specific immunogen.
Conjugation:	Unconjugated
Storage:	Store at -20°C as received.
Stability:	Stable for 12 months from date of receipt.
Gene Name:	cytochrome P450 family 26 subfamily A member 1
Database Link:	NP_000774 Entrez Gene 13082 Mouse Entrez Gene 154985 Rat Entrez Gene 1592 Human O43174
Synonyms:	CP26; CYP26; P450RAI; P450RAI1
Note:	Cytochrome P450 26A1 antibody detects endogenous levels of total Cytochrome P450 26A1 protein.
Protein Families:	Druggable Genome, P450, Transmembrane
Protein Pathways:	Retinol metabolism



[View online »](#)

Product images:



Western blot analysis of extracts from HepG2 cells, HeLa cells and 293 cells, using Cytochrome P450 26A1 antibody. The lane on the right is treated with the synthesized peptide.