

Product datasheet for **TA311698**

CDC20 Rabbit Polyclonal Antibody

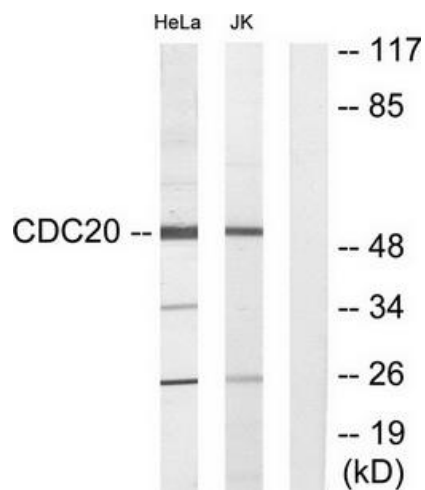
Product data:

Product Type:	Primary Antibodies
Applications:	WB
Recommended Dilution:	WB: 1:500~1:3000, ELISA: 1:20000
Reactivity:	Human, Mouse, Rat
Host:	Rabbit
Isotype:	IgG
Clonality:	Polyclonal
Immunogen:	The antiserum was produced against synthesized peptide derived from internal of human CDC20.
Formulation:	Phosphate buffered saline (without Mg ²⁺ and Ca ²⁺), pH 7.4, 150mM NaCl, 0.02% sodium azide and 50% glycerol.
Concentration:	lot specific
Purification:	The antibody was affinity-purified from rabbit antiserum by affinity-chromatography using epitope-specific immunogen.
Conjugation:	Unconjugated
Storage:	Store at -20°C as received.
Stability:	Stable for 12 months from date of receipt.
Gene Name:	cell division cycle 20
Database Link:	NP_001246 Entrez Gene 64515 Rat Entrez Gene 107995 Mouse Entrez Gene 991 Human Q12834
Synonyms:	bA276H19.3; CDC20A; p55CDC
Note:	CDC20 antibody detects endogenous levels of total CDC20 protein.
Protein Families:	Druggable Genome
Protein Pathways:	Cell cycle, Oocyte meiosis, Ubiquitin mediated proteolysis



[View online »](#)

Product images:



Western blot analysis of extracts from HeLa cells and Jurkat cells, using CDC20 antibody. The lane on the right is treated with the synthesized peptide.