

Product datasheet for **TA311696**

Adenylate cyclase 1 (ADCY1) Rabbit Polyclonal Antibody

Product data:

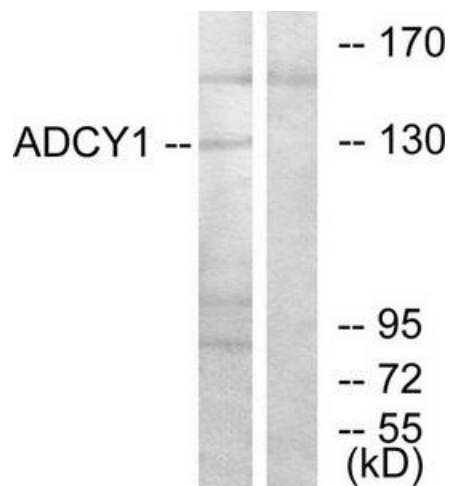
Product Type:	Primary Antibodies
Applications:	WB
Recommended Dilution:	WB: 1:500~1:3000, ELISA: 1:40000
Reactivity:	Human, Mouse
Host:	Rabbit
Isotype:	IgG
Clonality:	Polyclonal
Immunogen:	The antiserum was produced against synthesized peptide derived from internal of human ADCY1.
Formulation:	Phosphate buffered saline (without Mg ²⁺ and Ca ²⁺), pH 7.4, 150mM NaCl, 0.02% sodium azide and 50% glycerol.
Concentration:	lot specific
Purification:	The antibody was affinity-purified from rabbit antiserum by affinity-chromatography using epitope-specific immunogen.
Conjugation:	Unconjugated
Storage:	Store at -20°C as received.
Stability:	Stable for 12 months from date of receipt.
Gene Name:	adenylate cyclase 1 (brain)
Database Link:	NP_066939 Entrez Gene 432530 Mouse Entrez Gene 107 Human Q08828
Synonyms:	AC1; DFNB44
Note:	ADCY1 antibody detects endogenous levels of total ADCY1 protein.
Protein Families:	Druggable Genome, Transmembrane



[View online »](#)

Protein Pathways: Calcium signaling pathway, Chemokine signaling pathway, Dilated cardiomyopathy, Gap junction, GnRH signaling pathway, Long-term potentiation, Melanogenesis, Oocyte meiosis, Progesterone-mediated oocyte maturation, Purine metabolism, Vascular smooth muscle contraction

Product images:



Western blot analysis of extracts from COLO205 cells, using ADCY1 antibody. The lane on the right is treated with the synthesized peptide.