

## Product datasheet for **TA311695**

### ATG4B Rabbit Polyclonal Antibody

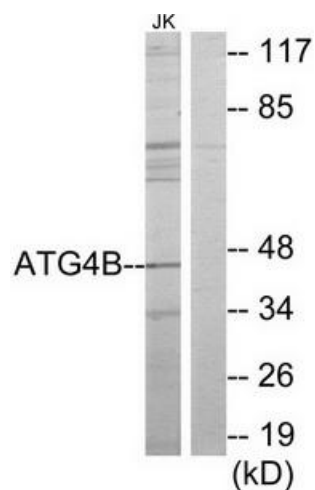
#### Product data:

|                       |  |
|-----------------------|--|
| Product Type:         | Primary Antibodies   |
| Applications:         | IHC, WB  |
| Recommended Dilution: | WB: 1:500~1:3000, IHC: 1:50~1:100, ELISA: 1:20000  |
| Reactivity:           | Human, Mouse   |
| Host:                 | Rabbit   |
| Isotype:              | IgG  |
| Clonality:            | Polyclonal   |
| Immunogen:            | The antiserum was produced against synthesized peptide derived from internal of human ATG4B.   |
| Formulation:          | Phosphate buffered saline (without Mg <sup>2+</sup> and Ca <sup>2+</sup> ), pH 7.4, 150mM NaCl, 0.02% sodium azide and 50% glycerol.   |
| Concentration:        | lot specific   |
| Purification:         | The antibody was affinity-purified from rabbit antiserum by affinity-chromatography using epitope-specific immunogen.                  |
| Conjugation:          | Unconjugated   |
| Storage:              | Store at -20°C as received.  |
| Stability:            | Stable for 12 months from date of receipt.   |
| Gene Name:            | autophagy related 4B cysteine peptidase  |
| Database Link:        | <a href="#">NP_037457</a><br><a href="#">Entrez Gene 66615 Mouse</a> <a href="#">Entrez Gene 23192 Human</a><br><a href="#">Q9Y4P1</a> |
| Synonyms:             | APG4B; AUTL1   |
| Note:                 | ATG4B antibody detects endogenous levels of total ATG4B protein.   |
| Protein Families:     | Protease   |
| Protein Pathways:     | Regulation of autophagy  |

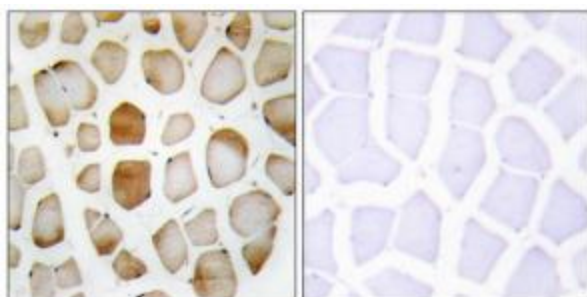


[View online »](#)

## Product images:



Western blot analysis of extracts from Jurkat cells, using ATG4B antibody. The lane on the right is treated with the synthesized peptide.



Immunohistochemistry analysis of paraffin-embedded human skeletal muscle tissue using ATG4B antibody. The picture on the right is treated with the synthesized peptide.