

## Product datasheet for **TA311693**

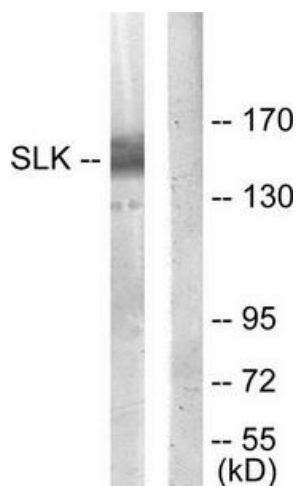
### SLK Rabbit Polyclonal Antibody

#### Product data:

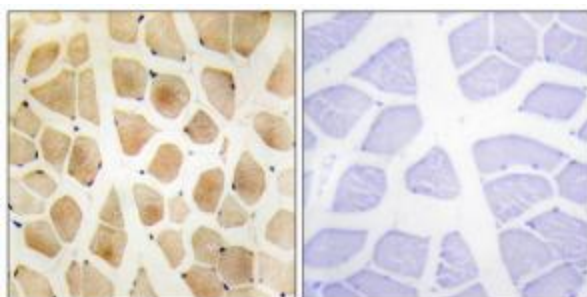
Product Type:	Primary Antibodies
Applications:	IF, IHC, WB
Recommended Dilution:	WB: 1:500~1:3000, IHC: 1:50~1:100, IF: 1:100~1:500, ELISA: 1:5000
Reactivity:	Human, Mouse, Rat
Host:	Rabbit
Isotype:	IgG
Clonality:	Polyclonal
Immunogen:	The antiserum was produced against synthesized peptide derived from C-terminal of human SLK.
Formulation:	Phosphate buffered saline (without Mg <sup>2+</sup> and Ca <sup>2+</sup> ), pH 7.4, 150mM NaCl, 0.02% sodium azide and 50% glycerol.
Concentration:	lot specific
Purification:	The antibody was affinity-purified from rabbit antiserum by affinity-chromatography using epitope-specific immunogen.
Conjugation:	Unconjugated
Storage:	Store at -20°C as received.
Stability:	Stable for 12 months from date of receipt.
Gene Name:	STE20 like kinase
Database Link:	<a href="#">NP_055535</a> <a href="#">Entrez Gene 20874 Mouse</a> <a href="#">Entrez Gene 54308 Rat</a> <a href="#">Entrez Gene 9748 Human</a> <a href="#">Q9H2G2</a>
Synonyms:	bA16H23.1; LOSK; se20-9; STK2
Note:	SLK antibody detects endogenous levels of total SLK protein.
Protein Families:	Druggable Genome, Protein Kinase
Protein Pathways:	Oocyte meiosis



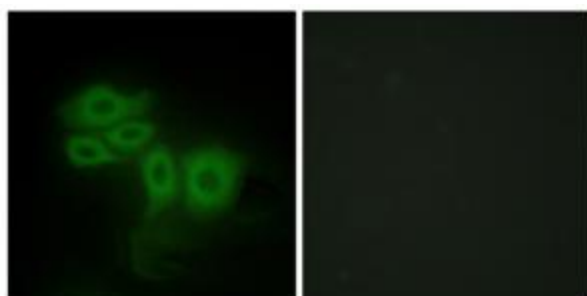
[View online »](#)

**Product images:**

Western blot analysis of extracts from COLO205 cells, using SLK antibody. The lane on the right is treated with the synthesized peptide.



Immunohistochemistry analysis of paraffin-embedded human skeletal muscle tissue using SLK antibody. The picture on the right is treated with the synthesized peptide.



Immunofluorescence analysis of HepG2 cells, using SLK antibody. The picture on the right is treated with the synthesized peptide.