

Product datasheet for **TA311691**

ADCK3 (COQ8A) Rabbit Polyclonal Antibody

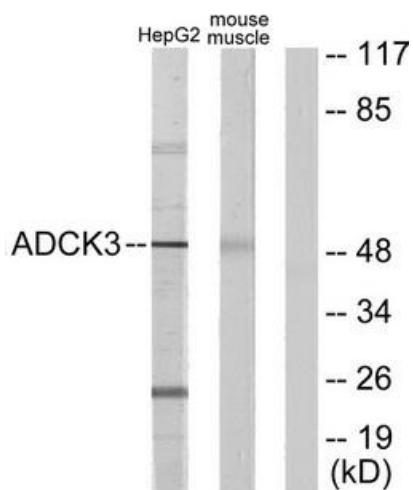
Product data:

Product Type:	Primary Antibodies
Applications:	WB
Recommended Dilution:	WB: 1:500~1:3000, ELISA: 1:10000
Reactivity:	Human, Mouse, Rat
Host:	Rabbit
Isotype:	IgG
Clonality:	Polyclonal
Immunogen:	The antiserum was produced against synthesized peptide derived from internal of human ADCK3.
Formulation:	Phosphate buffered saline (without Mg ²⁺ and Ca ²⁺), pH 7.4, 150mM NaCl, 0.02% sodium azide and 50% glycerol.
Concentration:	lot specific
Purification:	The antibody was affinity-purified from rabbit antiserum by affinity-chromatography using epitope-specific immunogen.
Conjugation:	Unconjugated
Storage:	Store at -20°C as received.
Stability:	Stable for 12 months from date of receipt.
Gene Name:	aarF domain containing kinase 3
Database Link:	NP_064632 Entrez Gene 67426 MouseEntrez Gene 360887 RatEntrez Gene 56997 Human Q8NI60
Synonyms:	ARCA2; CAB1; COQ8; COQ10D4; SCAR9
Note:	ADCK3 antibody detects endogenous levels of total ADCK3 protein.
Protein Families:	Protein Kinase



[View online »](#)

Product images:



Western blot analysis of extracts from HepG2 cells and mouse muscle cells, using ADCK3 antibody. The lane on the right is treated with the synthesized peptide.