

## Product datasheet for **TA311690**

### PPHLN1 Rabbit Polyclonal Antibody

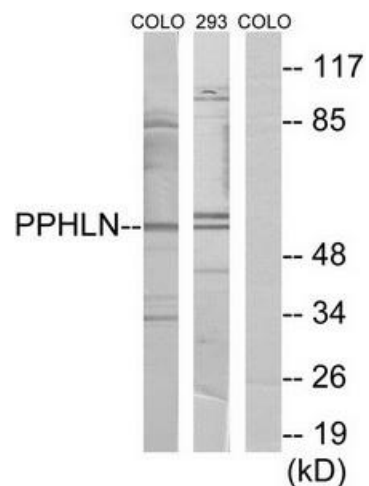
#### Product data:

Product Type:	Primary Antibodies
Applications:	IHC, WB
Recommended Dilution:	WB: 1:500~1:3000, IHC: 1:50~1:100, ELISA: 1:5000
Reactivity:	Human, Mouse
Host:	Rabbit
Isotype:	IgG
Clonality:	Polyclonal
Immunogen:	The antiserum was produced against synthesized peptide derived from internal of human PPHLN.
Formulation:	Phosphate buffered saline (without Mg <sup>2+</sup> and Ca <sup>2+</sup> ), pH 7.4, 150mM NaCl, 0.02% sodium azide and 50% glycerol.
Concentration:	lot specific
Purification:	The antibody was affinity-purified from rabbit antiserum by affinity-chromatography using epitope-specific immunogen.
Conjugation:	Unconjugated
Storage:	Store at -20°C as received.
Stability:	Stable for 12 months from date of receipt.
Gene Name:	periphilin 1
Database Link:	<a href="#">NP_001137259</a> <a href="#">Entrez Gene 223828 Mouse</a> <a href="#">Entrez Gene 51535 Human</a> <a href="#">Q8NEY8</a>
Synonyms:	CR; HSPC206; HSPC232
Note:	PPHLN antibody detects endogenous levels of total PPHLN protein.

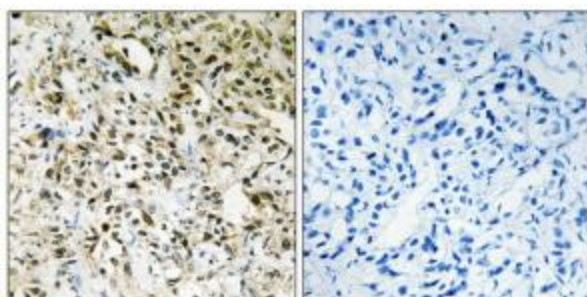


[View online »](#)

**Product images:**



Western blot analysis of extracts from COLO cells and 293 cells, using PPHLN antibody. The lane on the right is treated with the synthesized peptide.



Immunohistochemistry analysis of paraffin-embedded human liver carcinoma tissue using PPHLN antibody. The picture on the right is treated with the synthesized peptide.