

Product datasheet for **TA311689**

CAMKV Rabbit Polyclonal Antibody

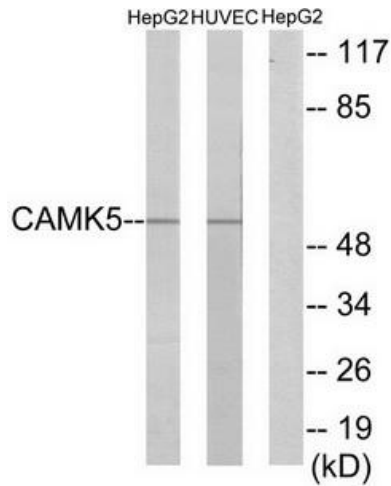
Product data:

Product Type:	Primary Antibodies
Applications:	IF, IHC, WB
Recommended Dilution:	WB: 1:500~1:3000, IHC: 1:50~1:100, IF: 1:100~1:500, ELISA: 1:5000
Reactivity:	Human, Mouse, Rat
Host:	Rabbit
Isotype:	IgG
Clonality:	Polyclonal
Immunogen:	The antiserum was produced against synthesized peptide derived from internal of human CAMK5.
Formulation:	Phosphate buffered saline (without Mg ²⁺ and Ca ²⁺), pH 7.4, 150mM NaCl, 0.02% sodium azide and 50% glycerol.
Concentration:	lot specific
Purification:	The antibody was affinity-purified from rabbit antiserum by affinity-chromatography using epitope-specific immunogen.
Conjugation:	Unconjugated
Storage:	Store at -20°C as received.
Stability:	Stable for 12 months from date of receipt.
Gene Name:	CaM kinase like vesicle associated
Database Link:	NP_076951 Entrez Gene 79011 Rat Entrez Gene 235604 Mouse Entrez Gene 79012 Human Q8NCB2
Synonyms:	1G5; VACAMKL
Note:	CAMK5 antibody detects endogenous levels of total CAMK5 protein.
Protein Families:	Druggable Genome, Protein Kinase

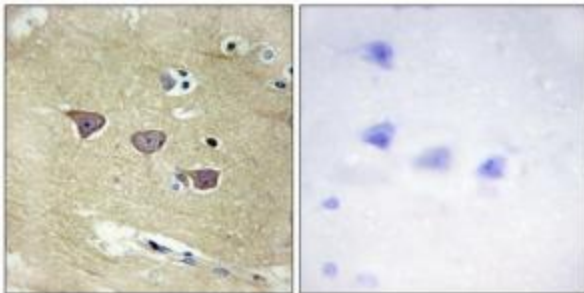


[View online »](#)

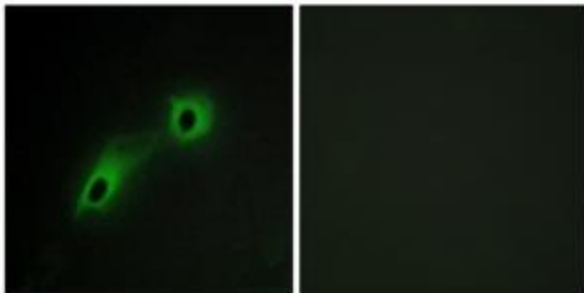
Product images:



Western blot analysis of extracts from HepG2 cells and HUVEC cells, using CAMK5 antibody. The lane on the right is treated with the synthesized peptide.



Immunohistochemistry analysis of paraffin-embedded human brain tissue using CAMK5 antibody. The picture on the right is treated with the synthesized peptide.



Immunofluorescence analysis of HeLa cells, using CAMK5 antibody. The picture on the right is treated with the synthesized peptide.