

## Product datasheet for **TA311684**

### Ephrin A5 (EFNA5) Rabbit Polyclonal Antibody

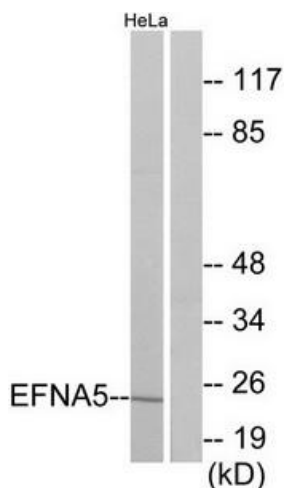
#### Product data:

Product Type:	Primary Antibodies
Applications:	IF, IHC, WB
Recommended Dilution:	WB: 1:500~1:3000, IHC: 1:50~1:100, IF: 1:100~1:500, ELISA: 1:40000
Reactivity:	Human, Mouse, Rat
Host:	Rabbit
Isotype:	IgG
Clonality:	Polyclonal
Immunogen:	The antiserum was produced against synthesized peptide derived from internal of human EFNA5.
Formulation:	Phosphate buffered saline (without Mg <sup>2+</sup> and Ca <sup>2+</sup> ), pH 7.4, 150mM NaCl, 0.02% sodium azide and 50% glycerol.
Concentration:	lot specific
Purification:	The antibody was affinity-purified from rabbit antiserum by affinity-chromatography using epitope-specific immunogen.
Conjugation:	Unconjugated
Storage:	Store at -20°C as received.
Stability:	Stable for 12 months from date of receipt.
Gene Name:	ephrin A5
Database Link:	<a href="#">NP_001953</a> <a href="#">Entrez Gene 13640 MouseEntrez Gene 116683 RatEntrez Gene 1946 Human P52803</a>
Synonyms:	AF1; EFL5; EPLG7; GLC1M; LERK7; RAGS
Note:	EFNA5 antibody detects endogenous levels of total EFNA5 protein.
Protein Families:	Druggable Genome
Protein Pathways:	Axon guidance

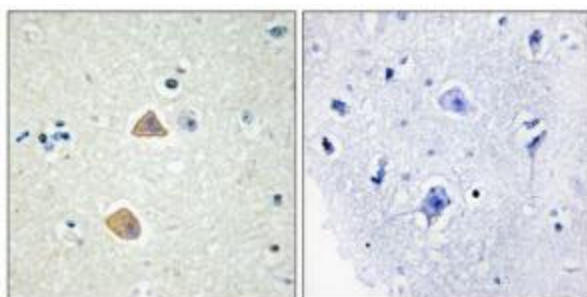


[View online »](#)

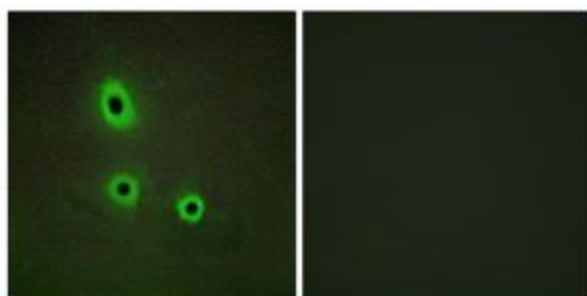
**Product images:**



Western blot analysis of extracts from HeLa cells, using EFNA5 antibody. The lane on the right is treated with the synthesized peptide.



Immunohistochemistry analysis of paraffin-embedded human brain tissue using EFNA5 antibody. The picture on the right is treated with the synthesized peptide.



Immunofluorescence analysis of A549 cells, using EFNA5 antibody. The picture on the right is treated with the synthesized peptide.