

Product datasheet for **TA311682**

CEBPD Rabbit Polyclonal Antibody

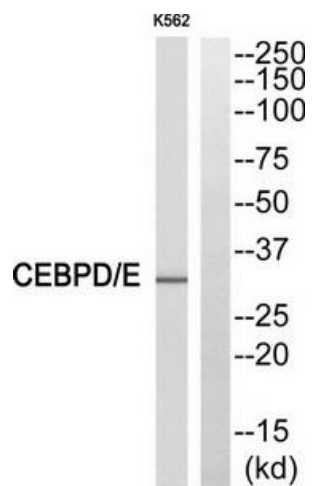
Product data:

Product Type:	Primary Antibodies
Applications:	WB
Recommended Dilution:	WB: 1:500~1:3000, ELISA: 1:20000
Reactivity:	Human, Mouse, Rat
Host:	Rabbit
Isotype:	IgG
Clonality:	Polyclonal
Immunogen:	The antiserum was produced against synthesized peptide derived from internal of human CEBPE.
Formulation:	Phosphate buffered saline (without Mg ²⁺ and Ca ²⁺), pH 7.4, 150mM NaCl, 0.02% sodium azide and 50% glycerol.
Concentration:	lot specific
Purification:	The antibody was affinity-purified from rabbit antiserum by affinity-chromatography using epitope-specific immunogen.
Conjugation:	Unconjugated
Storage:	Store at -20°C as received.
Stability:	Stable for 12 months from date of receipt.
Gene Name:	CCAAT/enhancer binding protein delta
Database Link:	NP_005186 Entrez Gene 12609 Mouse Entrez Gene 25695 Rat Entrez Gene 1052 Human P49716
Synonyms:	C; CELF; CRP3; EBP-delta; NF-IL6-beta
Note:	CEBPE antibody detects endogenous levels of total CEBPE protein.
Protein Families:	Druggable Genome, Transcription Factors



[View online »](#)

Product images:



Western blot analysis of extracts from LOVO cells and RAW264.7 cells, using CEBPE antibody. The lane on the right is treated with the synthesized peptide.