

Product datasheet for **TA311681**

hnRNP G (RBMX) Rabbit Polyclonal Antibody

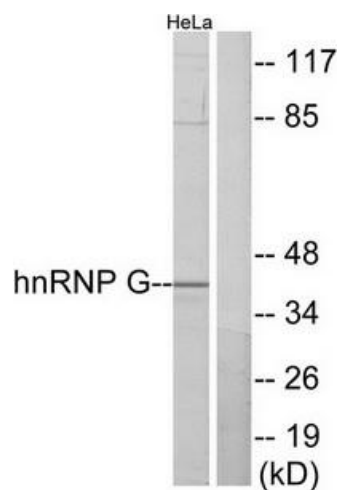
Product data:

Product Type:	Primary Antibodies
Applications:	IF, WB
Recommended Dilution:	WB: 1:500~1:3000, IF: 1:100~1:500, ELISA: 1:5000
Reactivity:	Human, Mouse, Rat
Host:	Rabbit
Isotype:	IgG
Clonality:	Polyclonal
Immunogen:	The antiserum was produced against synthesized peptide derived from N-terminal of human hnRNP G.
Formulation:	Phosphate buffered saline (without Mg ²⁺ and Ca ²⁺), pH 7.4, 150mM NaCl, 0.02% sodium azide and 50% glycerol.
Concentration:	lot specific
Purification:	The antibody was affinity-purified from rabbit antiserum by affinity-chromatography using epitope-specific immunogen.
Conjugation:	Unconjugated
Storage:	Store at -20°C as received.
Stability:	Stable for 12 months from date of receipt.
Gene Name:	RNA binding motif protein, X-linked
Database Link:	NP_001158275 Entrez Gene 19655 MouseEntrez Gene 302855 RatEntrez Gene 27316 Human P38159
Synonyms:	hnRNP-G; HNRNPG; HNRPG; MRXS11; RBMXP1; RBMXRT; RNMX
Note:	hnRNP G antibody detects endogenous levels of total hnRNP G protein.
Protein Pathways:	Spliceosome

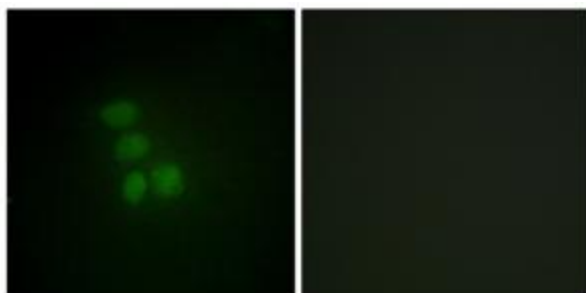


[View online »](#)

Product images:



Western blot analysis of extracts from HeLa cells, using hnRNP G antibody. The lane on the right is treated with the synthesized peptide.



Immunofluorescence analysis of HepG2 cells, using hnRNP G antibody. The picture on the right is treated with the synthesized peptide.