

## Product datasheet for **TA311680**

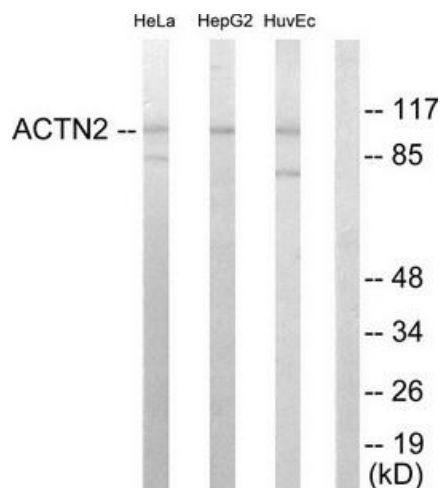
### ACTN2 Rabbit Polyclonal Antibody

#### Product data:

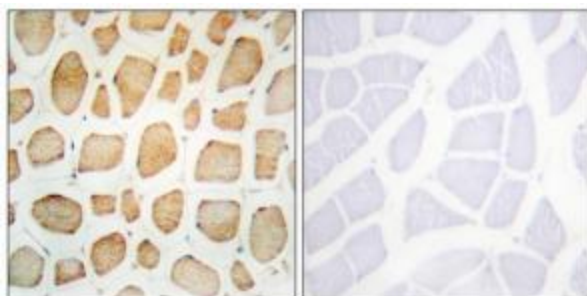
Product Type:	Primary Antibodies
Applications:	IF, IHC, WB
Recommended Dilution:	WB: 1:500~1:3000, IHC: 1:50~1:100, IF: 1:100~1:500, ELISA: 1:20000
Reactivity:	Human, Mouse, Rat
Host:	Rabbit
Isotype:	IgG
Clonality:	Polyclonal
Immunogen:	The antiserum was produced against synthesized peptide derived from N-terminal of human Actinin a-2/3.
Formulation:	Phosphate buffered saline (without Mg <sup>2+</sup> and Ca <sup>2+</sup> ), pH 7.4, 150mM NaCl, 0.02% sodium azide and 50% glycerol.
Concentration:	lot specific
Purification:	The antibody was affinity-purified from rabbit antiserum by affinity-chromatography using epitope-specific immunogen.
Conjugation:	Unconjugated
Storage:	Store at -20°C as received.
Stability:	Stable for 12 months from date of receipt.
Gene Name:	actinin alpha 2
Database Link:	<a href="#">NP_001094</a> <a href="#">Entrez Gene 11472 MouseEntrez Gene 291245 RatEntrez Gene 88 Human P35609</a>
Synonyms:	CMD1AA
Note:	Actin .-2/3 antibody detects endogenous levels of total Actin .-2/3 protein.
Protein Pathways:	Adherens junction, Arrhythmogenic right ventricular cardiomyopathy (ARVC), Focal adhesion, Leukocyte transendothelial migration, Regulation of actin cytoskeleton, Systemic lupus erythematosus, Tight junction



[View online »](#)

**Product images:**


Western blot analysis of extracts from HeLa cells, HepG2 cells and HUVEC cells, using Actin a-2/3 antibody. The lane on the right is treated with the synthesized peptide.



Immunohistochemistry analysis of paraffin-embedded human skeletal muscle tissue using Actin a-2/3 antibody. The picture on the right is treated with the synthesized peptide.



Immunofluorescence analysis of HeLa cells, using Actin a-2/3 antibody. The picture on the right is treated with the synthesized peptide.