

Product datasheet for **TA311679**

Cleavage stimulation factor 2 (CSTF2) Rabbit Polyclonal Antibody

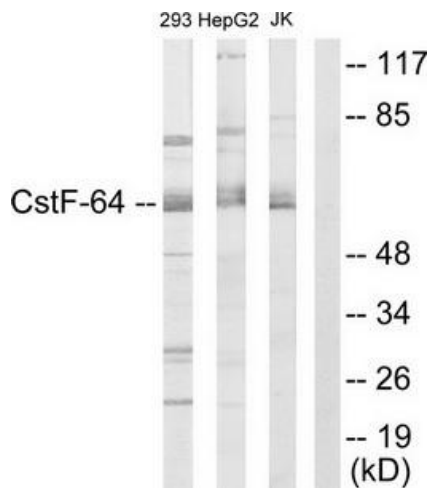
Product data:

Product Type:	Primary Antibodies
Applications:	IF, WB
Recommended Dilution:	WB: 1:500~1:3000, IF: 1:100~1:500, ELISA: 1:10000
Reactivity:	Human, Mouse
Host:	Rabbit
Isotype:	IgG
Clonality:	Polyclonal
Immunogen:	The antiserum was produced against synthesized peptide derived from N-terminal of human CSTF2.
Formulation:	Phosphate buffered saline (without Mg ²⁺ and Ca ²⁺), pH 7.4, 150mM NaCl, 0.02% sodium azide and 50% glycerol.
Concentration:	lot specific
Purification:	The antibody was affinity-purified from rabbit antiserum by affinity-chromatography using epitope-specific immunogen.
Conjugation:	Unconjugated
Storage:	Store at -20°C as received.
Stability:	Stable for 12 months from date of receipt.
Gene Name:	cleavage stimulation factor subunit 2
Database Link:	NP_001316 Entrez Gene 108062 Mouse Entrez Gene 1478 Human P33240
Synonyms:	CstF-64
Note:	CSTF2 antibody detects endogenous levels of total CSTF2 protein.

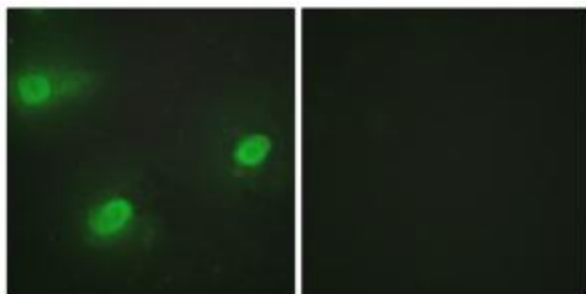


[View online »](#)

Product images:



Western blot analysis of extracts from 293 cells, HepG2 cells and Jurkat cells, using CSTF2 antibody. The lane on the right is treated with the synthesized peptide.



Immunofluorescence analysis of HeLa cells, using CSTF2 antibody. The picture on the right is treated with the synthesized peptide.