

Product datasheet for **TA311678**

Cyclophilin F (PPIF) Rabbit Polyclonal Antibody

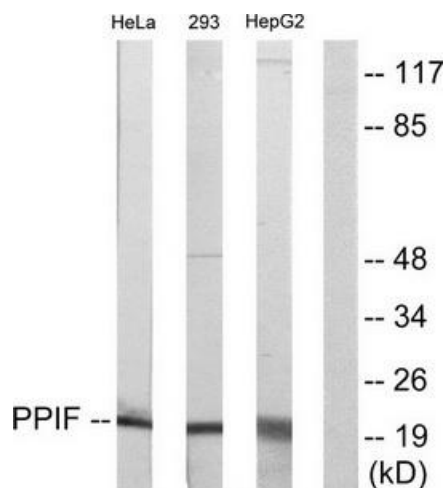
Product data:

Product Type:	Primary Antibodies
Applications:	IHC, WB
Recommended Dilution:	WB: 1:500~1:3000, IHC: 1:50~1:100, ELISA: 1:20000
Reactivity:	Human, Mouse, Rat
Host:	Rabbit
Isotype:	IgG
Clonality:	Polyclonal
Immunogen:	The antiserum was produced against synthesized peptide derived from internal of human PPIF.
Formulation:	Phosphate buffered saline (without Mg ²⁺ and Ca ²⁺), pH 7.4, 150mM NaCl, 0.02% sodium azide and 50% glycerol.
Concentration:	lot specific
Purification:	The antibody was affinity-purified from rabbit antiserum by affinity-chromatography using epitope-specific immunogen.
Conjugation:	Unconjugated
Storage:	Store at -20°C as received.
Stability:	Stable for 12 months from date of receipt.
Gene Name:	peptidylprolyl isomerase F
Database Link:	NP_005720 Entrez Gene 105675 MouseEntrez Gene 282819 RatEntrez Gene 10105 Human P30405
Synonyms:	Cyp-D; CyP-M; CYP3; CypD
Note:	PPIF antibody detects endogenous levels of total PPIF protein.

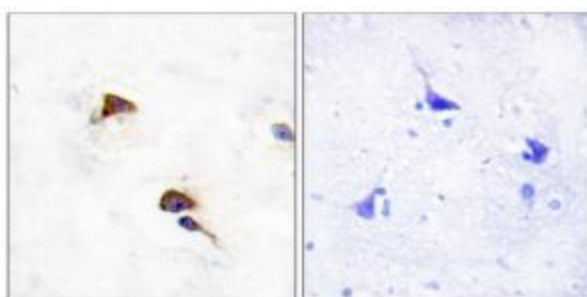


[View online »](#)

Product images:



Western blot analysis of extracts from HeLa cells, 293 cells and HepG2 cells, using PPIF antibody. The lane on the right is treated with the synthesized peptide.



Immunohistochemistry analysis of paraffin-embedded human brain tissue using PPIF antibody. The picture on the right is treated with the synthesized peptide.