

## Product datasheet for **TA311676**

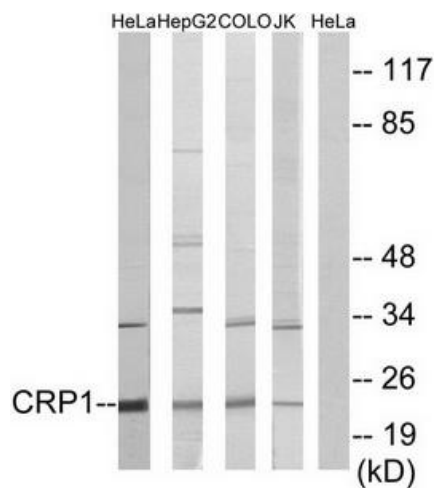
### CSRP1 Rabbit Polyclonal Antibody

#### Product data:

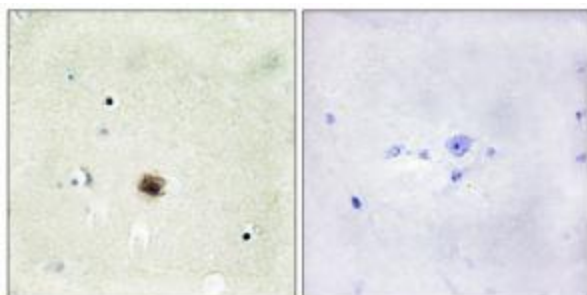
Product Type:	Primary Antibodies
Applications:	IHC, WB
Recommended Dilution:	WB: 1:500~1:3000, IHC: 1:50~1:100, ELISA: 1:20000
Reactivity:	Human, Mouse, Rat
Host:	Rabbit
Isotype:	IgG
Clonality:	Polyclonal
Immunogen:	The antiserum was produced against synthesized peptide derived from internal of human CRP1.
Formulation:	Phosphate buffered saline (without Mg <sup>2+</sup> and Ca <sup>2+</sup> ), pH 7.4, 150mM NaCl, 0.02% sodium azide and 50% glycerol.
Concentration:	lot specific
Purification:	The antibody was affinity-purified from rabbit antiserum by affinity-chromatography using epitope-specific immunogen.
Conjugation:	Unconjugated
Storage:	Store at -20°C as received.
Stability:	Stable for 12 months from date of receipt.
Gene Name:	cysteine and glycine rich protein 1
Database Link:	<a href="#">NP_001138245</a> <a href="#">Entrez Gene 13007 Mouse</a> <a href="#">Entrez Gene 29276 Rat</a> <a href="#">Entrez Gene 1465 Human</a> <a href="#">P21291</a>
Synonyms:	CRP; CRP1; CSRP; CYRP; cysteine-rich protein; cysteine and glycine-rich protein 1; D1S181E; DKFZp686M148; LIM-domain protein; OTTHUMP00000033921
Note:	CRP1 antibody detects endogenous levels of total CRP1 protein.



[View online »](#)

**Product images:**

Western blot analysis of extracts from HeLa, HepG2 cells, COLO cells and Jurkat cells, using CRP1 antibody. The lane on the right is treated with the synthesized peptide.



Immunohistochemistry analysis of paraffin-embedded human brain tissue using CRP1 antibody. The picture on the right is treated with the synthesized peptide.