

Product datasheet for **TA311675**

Hexokinase 1 (HK1) Rabbit Polyclonal Antibody

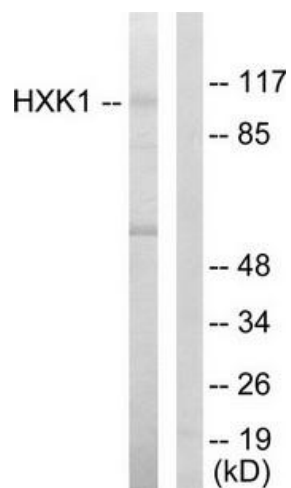
Product data:

Product Type:	Primary Antibodies
Applications:	WB
Recommended Dilution:	WB: 1:500~1:3000, ELISA: 1:20000
Reactivity:	Human, Mouse, Rat
Host:	Rabbit
Isotype:	IgG
Clonality:	Polyclonal
Immunogen:	The antiserum was produced against synthesized peptide derived from internal of human HXK1.
Formulation:	Phosphate buffered saline (without Mg ²⁺ and Ca ²⁺), pH 7.4, 150mM NaCl, 0.02% sodium azide and 50% glycerol.
Concentration:	lot specific
Purification:	The antibody was affinity-purified from rabbit antiserum by affinity-chromatography using epitope-specific immunogen.
Conjugation:	Unconjugated
Storage:	Store at -20°C as received.
Stability:	Stable for 12 months from date of receipt.
Gene Name:	hexokinase 1
Database Link:	NP_000179 Entrez Gene 15275 Mouse Entrez Gene 25058 Rat Entrez Gene 3098 Human P19367
Synonyms:	hexokinase; HK; HK1-ta; HK1-tb; HK1-tc; HKD; HKI; HMSNR; HXK1
Note:	HXK1 antibody detects endogenous levels of total HXK1 protein.
Protein Families:	Druggable Genome
Protein Pathways:	Amino sugar and nucleotide sugar metabolism, Fructose and mannose metabolism, Galactose metabolism, Glycolysis / Gluconeogenesis, Insulin signaling pathway, Metabolic pathways, Starch and sucrose metabolism, Type II diabetes mellitus



[View online »](#)

Product images:



Western blot analysis of extracts from HeLa cells, using HXK1 antibody. The lane on the right is treated with the synthesized peptide.