

Product datasheet for **TA311672**

MID1 Rabbit Polyclonal Antibody

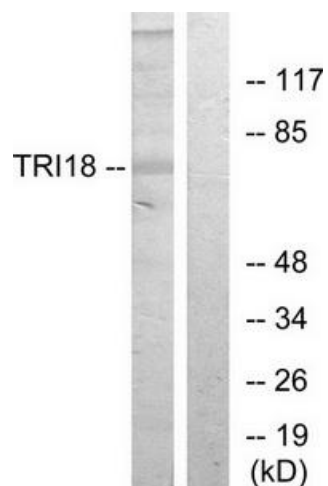
Product data:

Product Type:	Primary Antibodies
Applications:	IF, IHC, WB
Recommended Dilution:	WB: 1:500~1:3000, IHC: 1:50~1:100, IF: 1:100~1:500, ELISA: 1:40000
Reactivity:	Human, Mouse, Rat
Host:	Rabbit
Isotype:	IgG
Clonality:	Polyclonal
Immunogen:	The antiserum was produced against synthesized peptide derived from internal of human TRI18.
Formulation:	Phosphate buffered saline (without Mg ²⁺ and Ca ²⁺), pH 7.4, 150mM NaCl, 0.02% sodium azide and 50% glycerol.
Concentration:	lot specific
Purification:	The antibody was affinity-purified from rabbit antiserum by affinity-chromatography using epitope-specific immunogen.
Conjugation:	Unconjugated
Storage:	Store at -20°C as received.
Stability:	Stable for 12 months from date of receipt.
Gene Name:	midline 1
Database Link:	NP_000372 Entrez Gene 17318 Mouse Entrez Gene 54252 Rat Entrez Gene 4281 Human O15344
Synonyms:	BBBG1; FXY; GBBB1; MIDIN; OGS1; OS; OSX; RNF59; TRIM18; XPRE; ZNFXY
Note:	TRI18 antibody detects endogenous levels of total TRI18 protein.
Protein Families:	Druggable Genome
Protein Pathways:	Ubiquitin mediated proteolysis

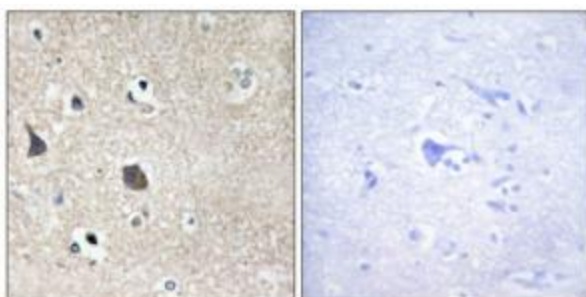


[View online »](#)

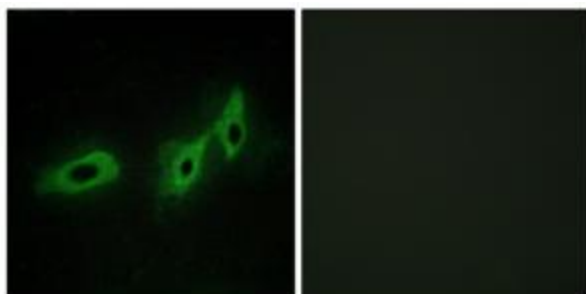
Product images:



Western blot analysis of extracts from 293 cells, using TRI18 antibody. The lane on the right is treated with the synthesized peptide.



Immunohistochemistry analysis of paraffin-embedded human brain tissue using TRI18 antibody. The picture on the right is treated with the synthesized peptide.



Immunofluorescence analysis of HeLa cells, using TRI18 antibody. The picture on the right is treated with the synthesized peptide.