

Product datasheet for **TA311671**

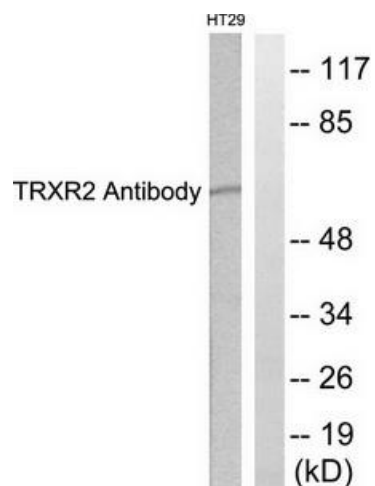
TXNRD2 Rabbit Polyclonal Antibody

Product data:

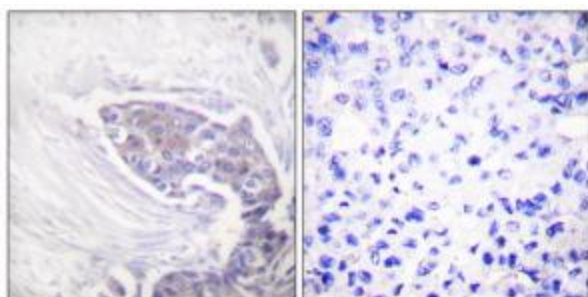
Product Type:	Primary Antibodies
Applications:	IHC, WB
Recommended Dilution:	WB: 1:500~1:3000, IHC: 1:50~1:100, ELISA: 1:10000
Reactivity:	Human, Mouse, Rat
Host:	Rabbit
Isotype:	IgG
Clonality:	Polyclonal
Immunogen:	The antiserum was produced against synthesized peptide derived from Internal of human TRXR2.
Formulation:	Phosphate buffered saline (without Mg ²⁺ and Ca ²⁺), pH 7.4, 150mM NaCl, 0.02% sodium azide and 50% glycerol.
Concentration:	lot specific
Purification:	The antibody was affinity-purified from rabbit antiserum by affinity-chromatography using epitope-specific immunogen.
Conjugation:	Unconjugated
Storage:	Store at -20°C as received.
Stability:	Stable for 12 months from date of receipt.
Gene Name:	thioredoxin reductase 2
Database Link:	NP_006431 Entrez Gene 26462 Mouse Entrez Gene 50551 Rat Entrez Gene 10587 Human Q9NNW7
Synonyms:	SELZ; TR; TR-BETA; TR3; TRXR2
Note:	RXR2 antibody detects endogenous levels of total TRXR2 protein.
Protein Families:	Druggable Genome
Protein Pathways:	Pyrimidine metabolism



[View online »](#)

Product images:

Western blot analysis of extracts from HT29 cells, using TRXR2 antibody. The lane on the right is treated with the synthesized peptide.



Immunohistochemistry analysis of paraffin-embedded human breast carcinoma tissue using TRXR2 antibody. The picture on the right is treated with the synthesized peptide.