

Product datasheet for **TA311670**

TIMP4 Rabbit Polyclonal Antibody

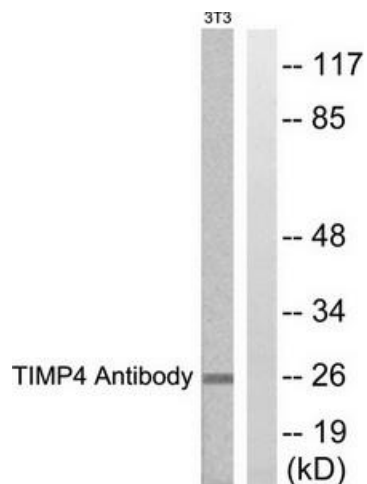
Product data:

Product Type:	Primary Antibodies
Applications:	IHC, WB
Recommended Dilution:	WB: 1:500~1:3000, IHC: 1:50~1:100, ELISA: 1:20000
Reactivity:	Human, Mouse, Rat
Host:	Rabbit
Isotype:	IgG
Clonality:	Polyclonal
Immunogen:	The antiserum was produced against synthesized peptide derived from C-terminal of human TIMP4.
Formulation:	Phosphate buffered saline (without Mg ²⁺ and Ca ²⁺), pH 7.4, 150mM NaCl, 0.02% sodium azide and 50% glycerol.
Concentration:	lot specific
Purification:	The antibody was affinity-purified from rabbit antiserum by affinity-chromatography using epitope-specific immunogen.
Conjugation:	Unconjugated
Storage:	Store at -20°C as received.
Stability:	Stable for 12 months from date of receipt.
Gene Name:	TIMP metalloproteinase inhibitor 4
Database Link:	NP_003247 Entrez Gene 110595 MouseEntrez Gene 680130 RatEntrez Gene 7079 Human Q99727
Synonyms:	TIMP metalloproteinase inhibitor 4; tissue inhibitor of metalloproteinase 4
Note:	TIMP4 antibody detects endogenous levels of total TIMP4 protein.
Protein Families:	Druggable Genome, Secreted Protein

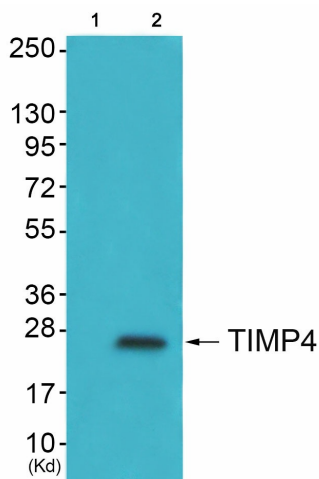


[View online »](#)

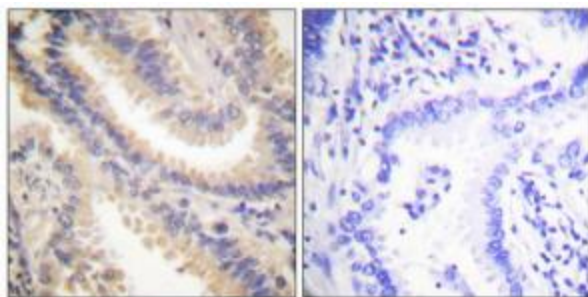
Product images:



Western blot analysis of extracts from NIH/3T3 cells, using TIMP4 antibody. The lane on the right is treated with the synthesized peptide.



Western blot analysis of extracts from HepG2 cells (Lane 2), using TIMP4 Antibody. The lane on the left is treated with synthesized peptide.



Immunohistochemistry analysis of paraffin-embedded human lung carcinoma tissue using TIMP4 antibody. The picture on the right is treated with the synthesized peptide.