

## Product datasheet for **TA311669**

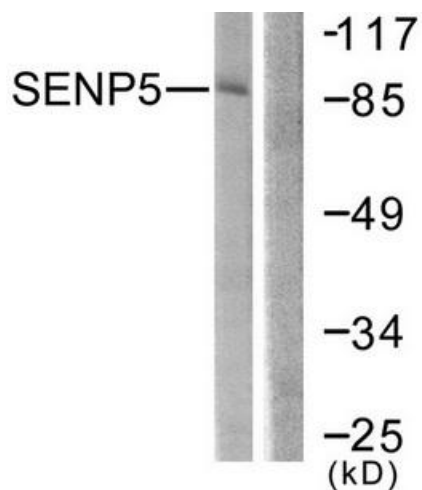
### SENP5 Rabbit Polyclonal Antibody

#### Product data:

Product Type:	Primary Antibodies
Applications:	IHC, WB
Recommended Dilution:	WB: 1:500~1:3000, IHC: 1:50~1:100, ELISA: 1:20000
Reactivity:	Human, Mouse
Host:	Rabbit
Isotype:	IgG
Clonality:	Polyclonal
Immunogen:	The antiserum was produced against synthesized peptide derived from Internal of human SENP5.
Formulation:	Phosphate buffered saline (without Mg <sup>2+</sup> and Ca <sup>2+</sup> ), pH 7.4, 150mM NaCl, 0.02% sodium azide and 50% glycerol.
Concentration:	lot specific
Purification:	The antibody was affinity-purified from rabbit antiserum by affinity-chromatography using epitope-specific immunogen.
Conjugation:	Unconjugated
Storage:	Store at -20°C as received.
Stability:	Stable for 12 months from date of receipt.
Gene Name:	SUMO1/sentrin specific peptidase 5
Database Link:	<a href="#">NP_689912</a> <a href="#">Entrez Gene 320213 Mouse</a> <a href="#">Entrez Gene 205564 Human</a> <a href="#">Q96HI0</a>
Synonyms:	DKFZp564O1016; FLJ42398; MGC27076
Note:	SENP5 antibody detects endogenous levels of total SENP5 protein.
Protein Families:	Druggable Genome, Protease



[View online »](#)

**Product images:**

Western blot analysis of extracts from COS7 cells, using SENP5 antibody. The lane on the right is treated with the synthesized peptide.

