

Product datasheet for **TA311667**

NCoR (NCOR1) Rabbit Polyclonal Antibody

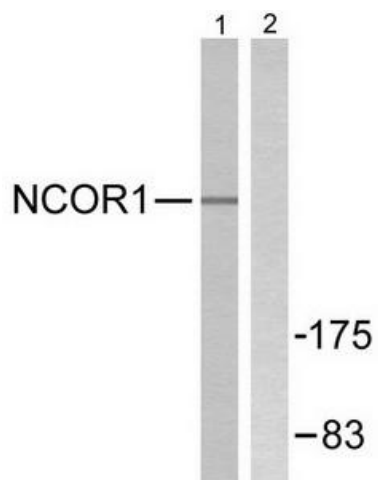
Product data:

Product Type:	Primary Antibodies
Applications:	IHC, WB
Recommended Dilution:	WB: 1:500~1:3000, IHC: 1:50~1:100, ELISA: 1:20000
Reactivity:	Human, Mouse
Host:	Rabbit
Isotype:	IgG
Clonality:	Polyclonal
Immunogen:	The antiserum was produced against synthesized peptide derived from Internal of human NCoR1.
Formulation:	Phosphate buffered saline (without Mg ²⁺ and Ca ²⁺), pH 7.4, 150mM NaCl, 0.02% sodium azide and 50% glycerol.
Concentration:	lot specific
Purification:	The antibody was affinity-purified from rabbit antiserum by affinity-chromatography using epitope-specific immunogen.
Conjugation:	Unconjugated
Storage:	Store at -20°C as received.
Stability:	Stable for 12 months from date of receipt.
Gene Name:	nuclear receptor corepressor 1
Database Link:	NP_001177367 Entrez Gene 20185 Mouse Entrez Gene 9611 Human O75376
Synonyms:	hN-CoR; N-CoR; N-CoR1; PPP1R109; TRAC1
Note:	NCoR1 antibody detects endogenous levels of total NCoR1 protein.
Protein Families:	Druggable Genome

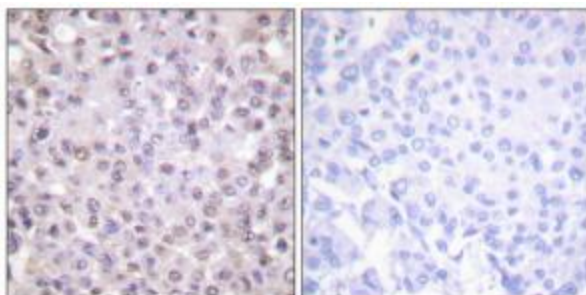


[View online »](#)

Product images:



Western blot analysis of extracts from MDA-MB-435 cells, using NCoR1 antibody. The lane on the right is treated with the synthesized peptide.



Immunohistochemistry analysis of paraffin-embedded human breast carcinoma tissue using NCoR1 antibody. The picture on the right is treated with the synthesized peptide.