

Product datasheet for **TA311665**

CD40 Rabbit Polyclonal Antibody

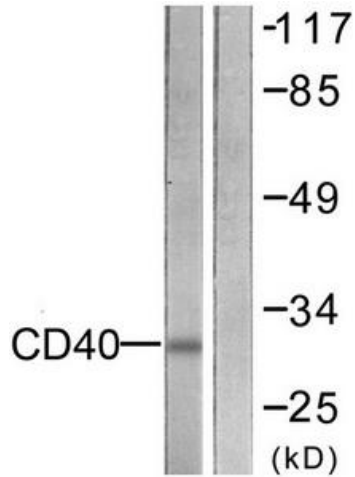
Product data:

Product Type:	Primary Antibodies
Applications:	IHC, WB
Recommended Dilution:	WB: 1:500~1:3000, IHC: 1:50~1:100, ELISA: 1:10000
Reactivity:	Human, Mouse
Host:	Rabbit
Isotype:	IgG
Clonality:	Polyclonal
Immunogen:	The antiserum was produced against synthesized peptide derived from C-terminal of human CD40.
Formulation:	Phosphate buffered saline (without Mg ²⁺ and Ca ²⁺), pH 7.4, 150mM NaCl, 0.02% sodium azide and 50% glycerol.
Concentration:	lot specific
Purification:	The antibody was affinity-purified from rabbit antiserum by affinity-chromatography using epitope-specific immunogen.
Conjugation:	Unconjugated
Storage:	Store at -20°C as received.
Stability:	Stable for 12 months from date of receipt.
Gene Name:	CD40 molecule
Database Link:	NP_001241 Entrez Gene 21939 Mouse Entrez Gene 958 Human P25942
Synonyms:	Bp50; CDW40; p50; TNFRSF5
Note:	CD40 antibody detects endogenous levels of total CD40 protein.
Protein Families:	Druggable Genome, Secreted Protein, Transmembrane
Protein Pathways:	Allograft rejection, Asthma, Autoimmune thyroid disease, Cell adhesion molecules (CAMs), Cytokine-cytokine receptor interaction, Primary immunodeficiency, Systemic lupus erythematosus, Toll-like receptor signaling pathway, Viral myocarditis

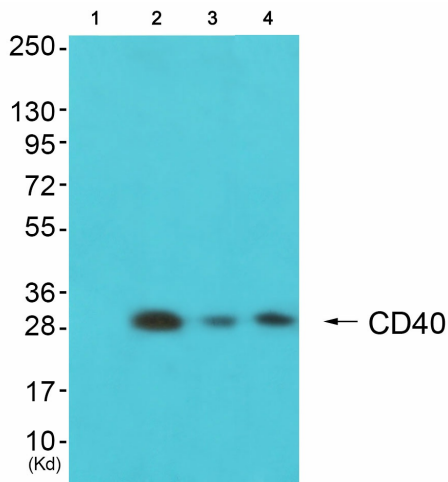


[View online »](#)

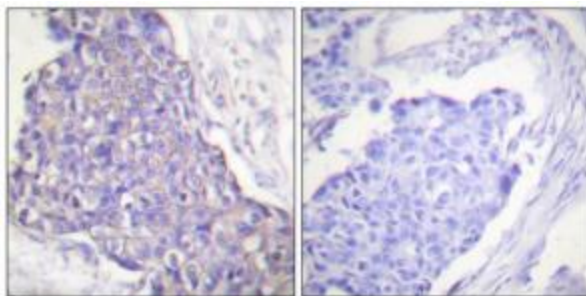
Product images:



Western blot analysis of extracts from COS7 cells, using CD40 antibody. The lane on the right is treated with the synthesized peptide.



Western blot analysis of extracts from JK cells (Lane 2), K562 cells (Lane 3) and 293 cells (Lane 4), using CD40 Antibody. The lane on the left is treated with synthesized peptide.



Immunohistochemistry analysis of paraffin-embedded human breast carcinoma tissue using CD40 antibody. The picture on the right is treated with the synthesized peptide.