

Product datasheet for **TA311663**

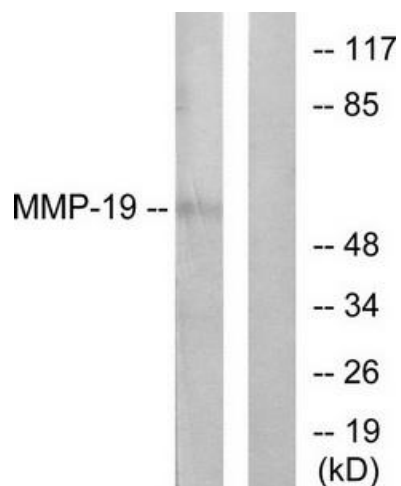
MMP19 Rabbit Polyclonal Antibody

Product data:

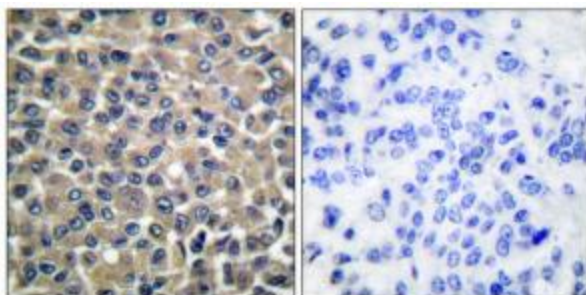
Product Type:	Primary Antibodies
Applications:	IHC, WB
Recommended Dilution:	WB: 1:500~1:3000, IHC: 1:50~1:100, ELISA: 1:10000
Reactivity:	Human, Mouse
Host:	Rabbit
Isotype:	IgG
Clonality:	Polyclonal
Immunogen:	The antiserum was produced against synthesized peptide derived from human MMP-19.
Formulation:	Phosphate buffered saline (without Mg ²⁺ and Ca ²⁺), pH 7.4, 150mM NaCl, 0.02% sodium azide and 50% glycerol.
Concentration:	lot specific
Purification:	The antibody was affinity-purified from rabbit antiserum by affinity-chromatography using epitope-specific immunogen.
Conjugation:	Unconjugated
Storage:	Store at -20°C as received.
Stability:	Stable for 12 months from date of receipt.
Gene Name:	matrix metalloproteinase 19
Database Link:	NP_073629 Entrez Gene 58223 Mouse Entrez Gene 4327 Human Q99542
Synonyms:	matrix metalloproteinase 19; matrix metalloproteinase 18; matrix metalloproteinase 19; MMP18; RASI-1
Note:	MMP-19 antibody detects endogenous levels of total MMP-19 protein.
Protein Families:	Protease, Secreted Protein



[View online »](#)

Product images:

Western blot analysis of extracts from HuvEc cells, using MMP-19 antibody (#TA311663). The lane on the right is treated with the synthesized peptide.



Immunohistochemical analysis of paraffin-embedded human breast carcinoma tissue using MMP-19 antibody (#TA311663). The picture on the right is treated with the synthesized peptide.