

Product datasheet for **TA311662**

MMP16 Rabbit Polyclonal Antibody

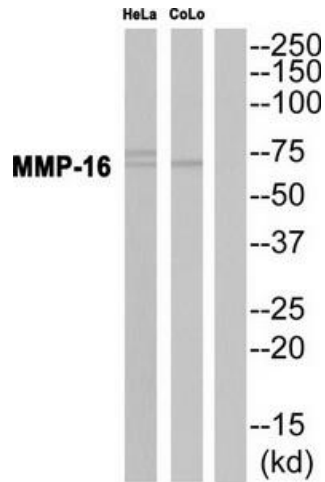
Product data:

Product Type:	Primary Antibodies
Applications:	IHC, WB
Recommended Dilution:	WB: 1:500~1:3000, IHC: 1:50~1:100, ELISA: 1:10000
Reactivity:	Human, Mouse, Rat
Host:	Rabbit
Isotype:	IgG
Clonality:	Polyclonal
Immunogen:	The antiserum was produced against synthesized peptide derived from human MMP-16 antibody.
Formulation:	Phosphate buffered saline (without Mg ²⁺ and Ca ²⁺), pH 7.4, 150mM NaCl, 0.02% sodium azide and 50% glycerol.
Concentration:	lot specific
Purification:	The antibody was affinity-purified from rabbit antiserum by affinity-chromatography using epitope-specific immunogen.
Conjugation:	Unconjugated
Storage:	Store at -20°C as received.
Stability:	Stable for 12 months from date of receipt.
Gene Name:	matrix metalloproteinase 16
Database Link:	NP_005932 Entrez Gene 17389 Mouse Entrez Gene 65205 Rat Entrez Gene 4325 Human P51512
Synonyms:	C8orf57; MMP-X2; MT-MMP2; MT-MMP3; MT3-MMP
Note:	MMP-16 antibody detects endogenous levels of total MMP-16 protein.
Protein Families:	Druggable Genome, Protease, Secreted Protein, Transmembrane

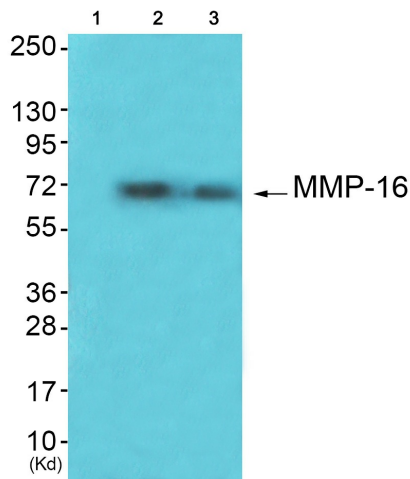


[View online »](#)

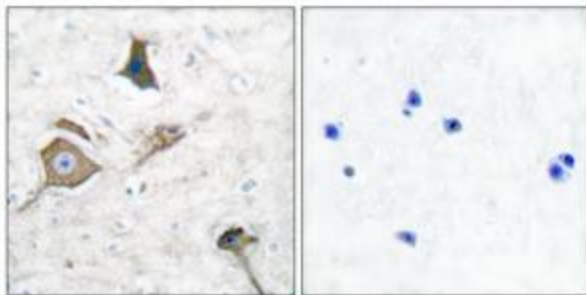
Product images:



Western blot analysis of extracts from HepG2 cells, using MMP-16 antibody (#TA311662). The lane on the right is treated with the synthesized peptide.



Western blot analysis of extracts from HeLa cells (Lane 2) and HepG2 cells (Lane 3), using MMP-16 Antibody. The lane on the left is treated with synthesized peptide.



Immunohistochemical analysis of paraffin-embedded human brain tissue using MMP-16 antibody (#TA311662). The picture on the right is treated with the synthesized peptide.