

## Product datasheet for **TA311661**

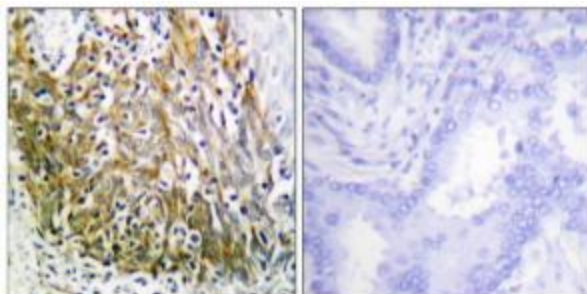
### MMP10 Rabbit Polyclonal Antibody

#### Product data:

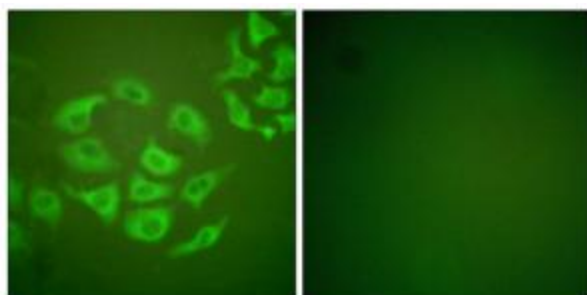
Product Type:	Primary Antibodies
Applications:	IF, IHC
Recommended Dilution:	IHC: 1:50~1:100, IF: 1:100~1:500, ELISA: 1:10000
Reactivity:	Human, Mouse, Rat
Host:	Rabbit
Isotype:	IgG
Clonality:	Polyclonal
Immunogen:	The antiserum was produced against synthesized peptide derived from Internal of human MMP-10.
Formulation:	Phosphate buffered saline (without Mg <sup>2+</sup> and Ca <sup>2+</sup> ), pH 7.4, 150mM NaCl, 0.02% sodium azide and 50% glycerol.
Concentration:	lot specific
Purification:	The antibody was affinity-purified from rabbit antiserum by affinity-chromatography using epitope-specific immunogen.
Conjugation:	Unconjugated
Storage:	Store at -20°C as received.
Stability:	Stable for 12 months from date of receipt.
Gene Name:	matrix metalloproteinase 10
Database Link:	<a href="#">NP_002416</a> <a href="#">Entrez Gene 17384 MouseEntrez Gene 117061 RatEntrez Gene 4319 Human P09238</a>
Synonyms:	SL-2; STMY2
Note:	MMP-10 antibody detects endogenous levels of total MMP-10 protein.
Protein Families:	Druggable Genome, Protease



[View online »](#)

**Product images:**

Immunohistochemistry analysis of paraffin-embedded human lung carcinoma tissue using MMP-10 antibody. The picture on the right is treated with the synthesized peptide.



Immunofluorescence analysis of HepG2 cells, using MMP-10 antibody. The picture on the right is treated with the synthesized peptide.