

Product datasheet for **TA311660**

Integrin beta 5 (ITGB5) Rabbit Polyclonal Antibody

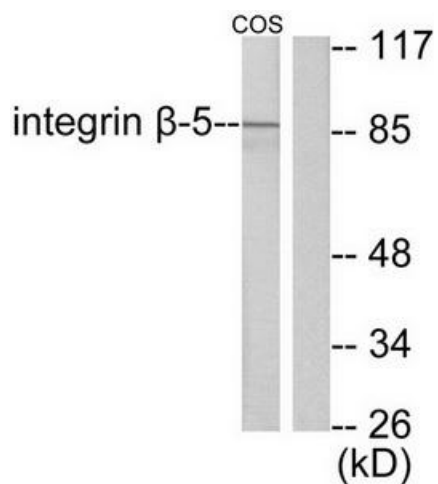
Product data:

Product Type:	Primary Antibodies
Applications:	WB
Recommended Dilution:	WB: 1:500~1:3000, ELISA: 1:20000
Reactivity:	Human, Mouse, Rat
Host:	Rabbit
Isotype:	IgG
Clonality:	Polyclonal
Immunogen:	The antiserum was produced against synthesized peptide derived from human Integrin β 5.
Formulation:	Phosphate buffered saline (without Mg ²⁺ and Ca ²⁺), pH 7.4, 150mM NaCl, 0.02% sodium azide and 50% glycerol.
Concentration:	lot specific
Purification:	The antibody was affinity-purified from rabbit antiserum by affinity-chromatography using epitope-specific immunogen.
Conjugation:	Unconjugated
Storage:	Store at -20°C as received.
Stability:	Stable for 12 months from date of receipt.
Gene Name:	integrin subunit beta 5
Database Link:	NP_002204 Entrez Gene 16419 MouseEntrez Gene 257645 RatEntrez Gene 3693 Human P18084
Synonyms:	FLJ26658
Note:	Integrin .5 antibody detects endogenous levels of total Integrin .5 protein.
Protein Families:	Druggable Genome, Transmembrane
Protein Pathways:	Arrhythmogenic right ventricular cardiomyopathy (ARVC), Dilated cardiomyopathy, ECM-receptor interaction, Focal adhesion, Hypertrophic cardiomyopathy (HCM), Regulation of actin cytoskeleton

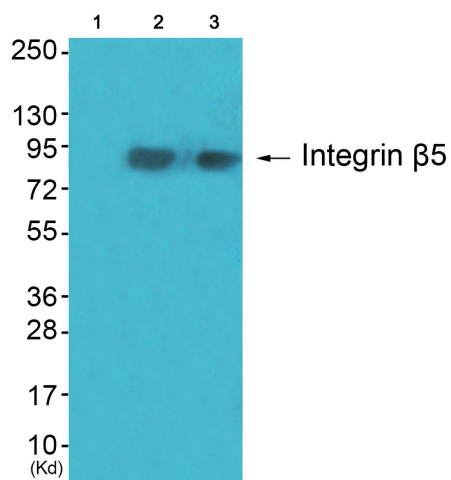


[View online »](#)

Product images:



Western blot analysis of extracts from COS7 cells, using Integrin β 5 antibody (#TA311660). The lane on the right is treated with the synthesized peptide.



Western blot analysis of extracts from JK cells (Lane 2) and cos-7 cells (Lane 3), using Integrin β 5 Antibody. The lane on the left is treated with synthesized peptide.