

## Product datasheet for **TA311659**

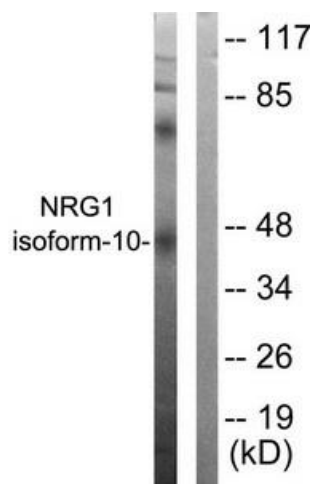
### NRG1 Rabbit Polyclonal Antibody

#### Product data:

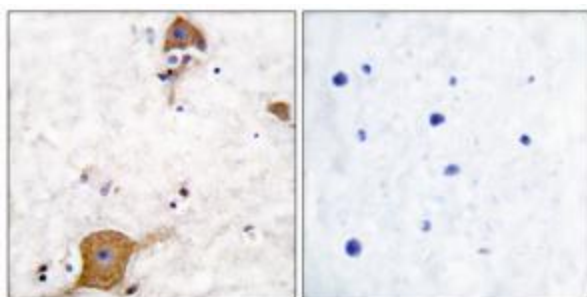
Product Type:	Primary Antibodies
Applications:	IHC, WB
Recommended Dilution:	WB: 1:500~1:3000, IHC: 1:50~1:100, ELISA: 1:10000
Reactivity:	Human, Mouse, Rat
Host:	Rabbit
Isotype:	IgG
Clonality:	Polyclonal
Immunogen:	The antiserum was produced against synthesized peptide derived from human NRG1 isoform-10.
Formulation:	Phosphate buffered saline (without Mg <sup>2+</sup> and Ca <sup>2+</sup> ), pH 7.4, 150mM NaCl, 0.02% sodium azide and 50% glycerol.
Concentration:	lot specific
Purification:	The antibody was affinity-purified from rabbit antiserum by affinity-chromatography using epitope-specific immunogen.
Conjugation:	Unconjugated
Storage:	Store at -20°C as received.
Stability:	Stable for 12 months from date of receipt.
Gene Name:	neuregulin 1
Database Link:	<a href="#">NP_001153467</a> <a href="#">Entrez Gene 112400 Rat</a> <a href="#">Entrez Gene 211323 Mouse</a> <a href="#">Entrez Gene 3084 Human</a> <a href="#">Q02297</a>
Synonyms:	ARIA; GGF; GGF2; HGL; HRG; HRG1; HRGA; MST131; MSTP131; NDF; NRG1-IT2; SMDF
Note:	NRG1 isoform-10 antibody detects endogenous levels of total NRG1 isoform-10 protein.
Protein Families:	Druggable Genome, Secreted Protein, Transcription Factors, Transmembrane
Protein Pathways:	ErbB signaling pathway



[View online »](#)

**Product images:**

Western blot analysis of extracts from SKOV3 cells, using NRG1 isoform-10 antibody. The lane on the right is treated with the synthesized peptide.



Immunohistochemical analysis of paraffin-embedded human brain tissue using NRG1 isoform-10 antibody. The picture on the right is treated with the synthesized peptide.