

## Product datasheet for **TA311658**

### Metabotropic Glutamate Receptor 4 (GRM4) Rabbit Polyclonal Antibody

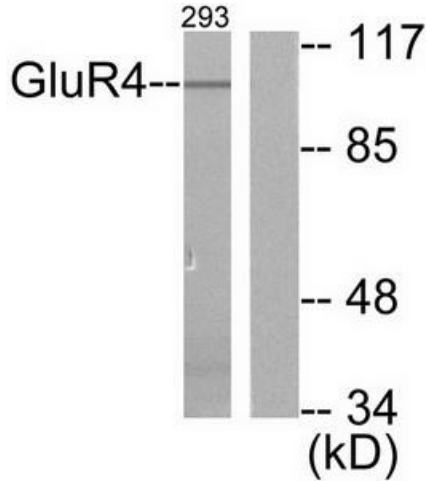
#### Product data:

Product Type:	Primary Antibodies
Applications:	IHC, WB
Recommended Dilution:	WB: 1:500~1:3000, IHC: 1:50~1:100, ELISA: 1:10000
Reactivity:	Human, Mouse, Rat
Host:	Rabbit
Isotype:	IgG
Clonality:	Polyclonal
Immunogen:	The antiserum was produced against synthesized peptide derived from human GluR4.
Formulation:	Phosphate buffered saline (without Mg <sup>2+</sup> and Ca <sup>2+</sup> ), pH 7.4, 150mM NaCl, 0.02% sodium azide and 50% glycerol.
Concentration:	lot specific
Purification:	The antibody was affinity-purified from rabbit antiserum by affinity-chromatography using epitope-specific immunogen.
Conjugation:	Unconjugated
Storage:	Store at -20°C as received.
Stability:	Stable for 12 months from date of receipt.
Gene Name:	glutamate metabotropic receptor 4
Database Link:	<a href="#">NP_000832</a> <a href="#">Entrez Gene 24417 Rat</a> <a href="#">Entrez Gene 268934 Mouse</a> <a href="#">Entrez Gene 2914 Human</a> <a href="#">Q14833</a>
Synonyms:	GPRC1D; mGlu4; MGLUR4
Note:	GluR4 antibody detects endogenous levels of total GluR4 protein.
Protein Families:	Druggable Genome, GPCR, Transmembrane
Protein Pathways:	Neuroactive ligand-receptor interaction, Taste transduction

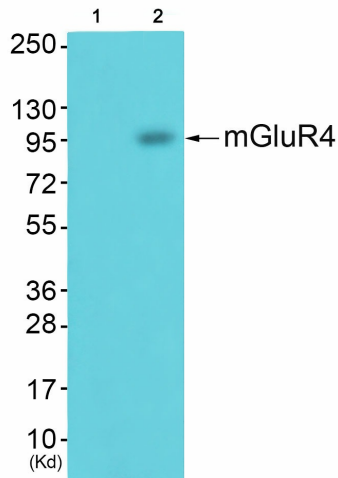


[View online »](#)

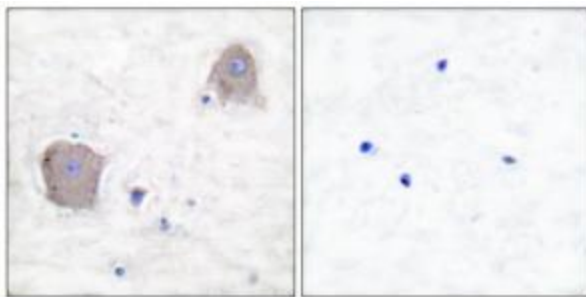
Product images:



Western blot analysis of extracts from 293 cells, untreated or treated with Forskolin (40nM, 30mins), using GluR4 antibody (#TA311658). The lane on the right is treated with the synthesized peptide.



Western blot analysis of extracts from JK cells (Lane 2), using mGluR4 Antibody. The lane on the left is treated with synthesized peptide.



Immunohistochemical analysis of paraffin-embedded human brain tissue using GluR4 antibody (#TA311658). The picture on the right is treated with the synthesized peptide.