

## Product datasheet for **TA311656**

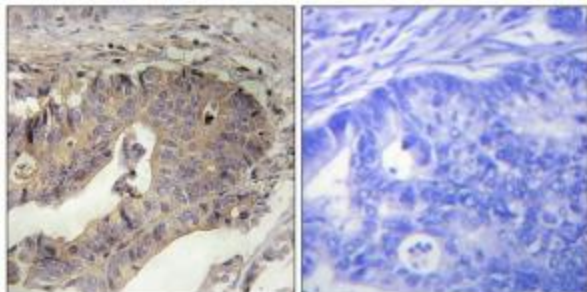
### Fibrillin 1 (FBN1) Rabbit Polyclonal Antibody

#### Product data:

Product Type:	Primary Antibodies
Applications:	IHC
Recommended Dilution:	IHC: 1:50~1:100, ELISA: 1:40000
Reactivity:	Human, Mouse, Rat
Host:	Rabbit
Isotype:	IgG
Clonality:	Polyclonal
Immunogen:	The antiserum was produced against synthesized peptide derived from human Fibrillin-1.
Formulation:	Phosphate buffered saline (without Mg <sup>2+</sup> and Ca <sup>2+</sup> ), pH 7.4, 150mM NaCl, 0.02% sodium azide and 50% glycerol.
Concentration:	lot specific
Purification:	The antibody was affinity-purified from rabbit antiserum by affinity-chromatography using epitope-specific immunogen.
Conjugation:	Unconjugated
Storage:	Store at -20°C as received.
Stability:	Stable for 12 months from date of receipt.
Gene Name:	fibrillin 1
Database Link:	<a href="#">NP_000129</a> <a href="#">Entrez Gene 14118 Mouse</a> <a href="#">Entrez Gene 83727 Rat</a> <a href="#">Entrez Gene 2200 Human</a> <a href="#">P35555</a>
Synonyms:	ACMICD; ECTOL1; FBN; GPHYSD2; MASS; MFS1; OCTD; SGS; SSKS; WMS; WMS2
Note:	Fibrillin-1 antibody detects endogenous levels of total Fibrillin-1 protein.
Protein Families:	Druggable Genome



[View online »](#)

**Product images:**

Immunohistochemical analysis of paraffin-embedded human breast carcinoma tissue, using Fibrillin-1 antibody. The picture on the right is treated with the synthesized peptide.