

Product datasheet for **TA311655**

FGFR1 Oncogene Partner (FGFR1OP) Rabbit Polyclonal Antibody

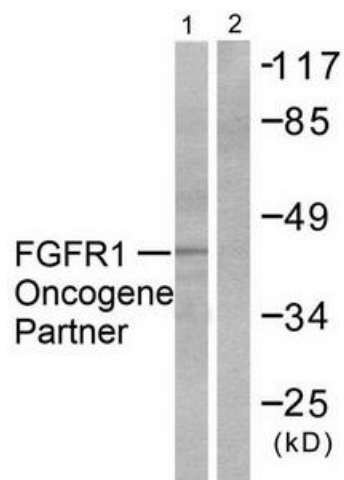
Product data:

Product Type:	Primary Antibodies
Applications:	IHC, WB
Recommended Dilution:	WB: 1:500~1:3000, IHC: 1:50~1:100, ELISA: 1:10000
Reactivity:	Human, Mouse, Rat
Host:	Rabbit
Isotype:	IgG
Clonality:	Polyclonal
Immunogen:	The antiserum was produced against synthesized peptide derived from human FGFR1 Oncogene Partner.
Formulation:	Phosphate buffered saline (without Mg ²⁺ and Ca ²⁺), pH 7.4, 150mM NaCl, 0.02% sodium azide and 50% glycerol.
Concentration:	lot specific
Purification:	The antibody was affinity-purified from rabbit antiserum by affinity-chromatography using epitope-specific immunogen.
Conjugation:	Unconjugated
Storage:	Store at -20°C as received.
Stability:	Stable for 12 months from date of receipt.
Gene Name:	FGFR1 oncogene partner
Database Link:	NP_008976 Entrez Gene 75296 MouseEntrez Gene 683722 RatEntrez Gene 11116 Human O95684
Synonyms:	FOP
Note:	FGFR1 Oncogene Partner antibody detects endogenous levels of total FGFR1 Oncogene Partner protein.
Protein Families:	Druggable Genome

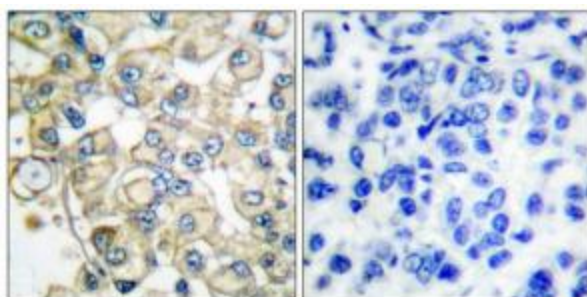


[View online »](#)

Product images:



Western blot analysis of extracts from HepG2 cells, using FGFR1 Oncogene Partner antibody (#TA311655). The lane on the right is treated with the synthesized peptide.



Immunohistochemical analysis of paraffin-embedded human breast carcinoma tissue using FGFR1 Oncogene Partner antibody (#TA311655). The picture on the right is treated with the synthesized peptide.