

## Product datasheet for **TA311653**

### Ephrin B3 (EFNB3) Rabbit Polyclonal Antibody

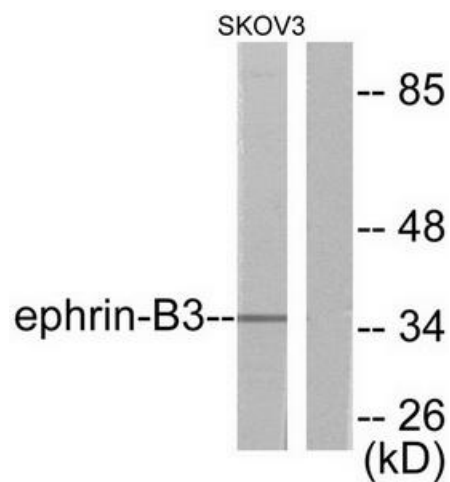
#### Product data:

Product Type:	Primary Antibodies
Applications:	IHC, WB
Recommended Dilution:	WB: 1:500~1:3000, IHC: 1:50~1:100, ELISA: 1:20000
Reactivity:	Human, Mouse, Rat
Host:	Rabbit
Isotype:	IgG
Clonality:	Polyclonal
Immunogen:	The antiserum was produced against synthesized peptide derived from human Ephrin-B3.
Formulation:	Phosphate buffered saline (without Mg <sup>2+</sup> and Ca <sup>2+</sup> ), pH 7.4, 150mM NaCl, 0.02% sodium azide and 50% glycerol.
Concentration:	lot specific
Purification:	The antibody was affinity-purified from rabbit antiserum by affinity-chromatography using epitope-specific immunogen.
Conjugation:	Unconjugated
Storage:	Store at -20°C as received.
Stability:	Stable for 12 months from date of receipt.
Gene Name:	ephrin B3
Database Link:	<a href="#">NP_001397</a> <a href="#">Entrez Gene 13643 MouseEntrez Gene 360546 RatEntrez Gene 1949 Human Q15768</a>
Synonyms:	EFL6; EPLG8; LERK8
Note:	Ephrin-B3 antibody detects endogenous levels of total Ephrin-B3 protein.
Protein Families:	Druggable Genome, Transmembrane
Protein Pathways:	Axon guidance

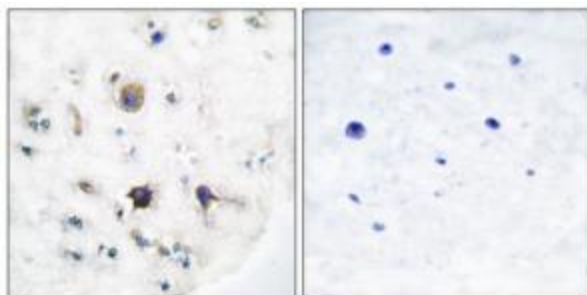


[View online »](#)

## Product images:



Western blot analysis of extracts from SKOV3 cells, using Ephrin-B3 antibody (#TA311653). The lane on the right is treated with the synthesized peptide.



Immunohistochemical analysis of paraffin-embedded human brain tissue using Ephrin-B3 antibody (#TA311653). The picture on the right is treated with the synthesized peptide.