

## Product datasheet for **TA311651**

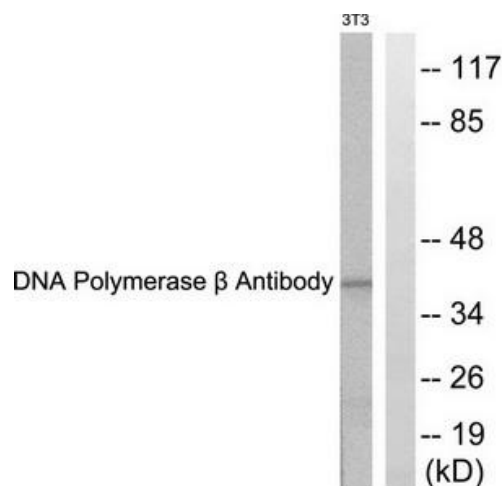
### DNA Polymerase beta (POLB) Rabbit Polyclonal Antibody

#### Product data:

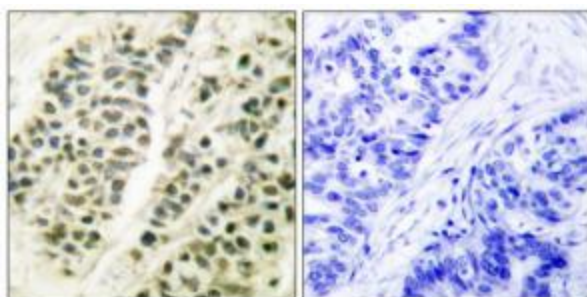
Product Type:	Primary Antibodies
Applications:	IHC, WB
Recommended Dilution:	WB: 1:500~1:3000, IHC: 1:50~1:100, ELISA: 1:10000
Reactivity:	Human, Mouse, Rat
Host:	Rabbit
Isotype:	IgG
Clonality:	Polyclonal
Immunogen:	The antiserum was produced against synthesized peptide derived from human DNA Polymerase $\beta$ .
Formulation:	Phosphate buffered saline (without Mg <sup>2+</sup> and Ca <sup>2+</sup> ), pH 7.4, 150mM NaCl, 0.02% sodium azide and 50% glycerol.
Concentration:	lot specific
Purification:	The antibody was affinity-purified from rabbit antiserum by affinity-chromatography using epitope-specific immunogen.
Conjugation:	Unconjugated
Storage:	Store at -20°C as received.
Stability:	Stable for 12 months from date of receipt.
Gene Name:	polymerase (DNA) beta
Database Link:	<a href="#">NP_002681</a> <a href="#">Entrez Gene 18970 Mouse</a> <a href="#">Entrez Gene 29240 Rat</a> <a href="#">Entrez Gene 5423 Human</a> <a href="#">P06746</a>
Synonyms:	MGC125976
Note:	DNA Polymerase antibody detects endogenous levels of total DNA Polymerase protein.
Protein Families:	Druggable Genome
Protein Pathways:	Base excision repair



[View online »](#)

**Product images:**


Western blot analysis of extracts from NIH/3T3 cells, using DNA Polymerase  $\beta$  antibody (#TA311651). The lane on the right is treated with the synthesized peptide.



Immunohistochemical analysis of paraffin-embedded human breast carcinoma tissue using DNA Polymerase  $\beta$  antibody (#TA311651). The picture on the right is treated with the synthesized peptide.