

## Product datasheet for **TA311649**

### Collagen II (COL2A1) Rabbit Polyclonal Antibody

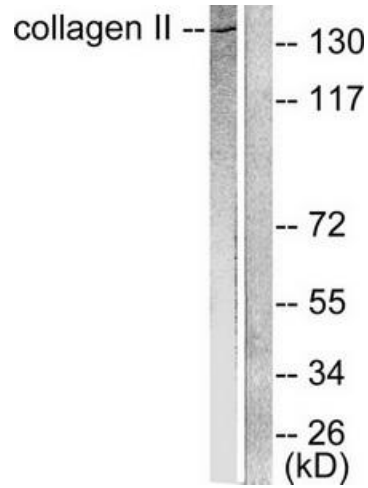
#### Product data:

Product Type:	Primary Antibodies
Applications:	IF, IHC, WB
Recommended Dilution:	WB: 1:500~1:3000, IHC: 1:50~1:100, IF: 1:100~1:500, ELISA: 1:20000
Reactivity:	Human, Mouse, Rat
Host:	Rabbit
Isotype:	IgG
Clonality:	Polyclonal
Immunogen:	The antiserum was produced against synthesized peptide derived from human Collagen II.
Formulation:	Phosphate buffered saline (without Mg <sup>2+</sup> and Ca <sup>2+</sup> ), pH 7.4, 150mM NaCl, 0.02% sodium azide and 50% glycerol.
Concentration:	lot specific
Purification:	The antibody was affinity-purified from rabbit antiserum by affinity-chromatography using epitope-specific immunogen.
Conjugation:	Unconjugated
Storage:	Store at -20°C as received.
Stability:	Stable for 12 months from date of receipt.
Gene Name:	collagen type II alpha 1 chain
Database Link:	<a href="#">NP_001835</a> <a href="#">Entrez Gene 12824 Mouse</a> <a href="#">Entrez Gene 25412 Rat</a> <a href="#">Entrez Gene 1280 Human</a> <a href="#">P02458</a>
Synonyms:	ANFH; AOM; COL11A3; SEDC; STL1
Note:	Collagen II antibody detects endogenous levels of total Collagen II protein.
Protein Pathways:	ECM-receptor interaction, Focal adhesion

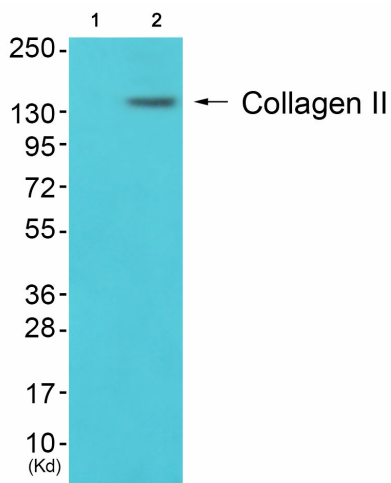


[View online »](#)

Product images:



Western blot analysis of extracts from COLO205 cells, using Collagen II antibody (#TA311649). The lane on the right is treated with the synthesized peptide.



Western blot analysis of extracts from 3T3 cells (Lane 2), using Collagen II Antibody. The lane on the left is treated with synthesized peptide.

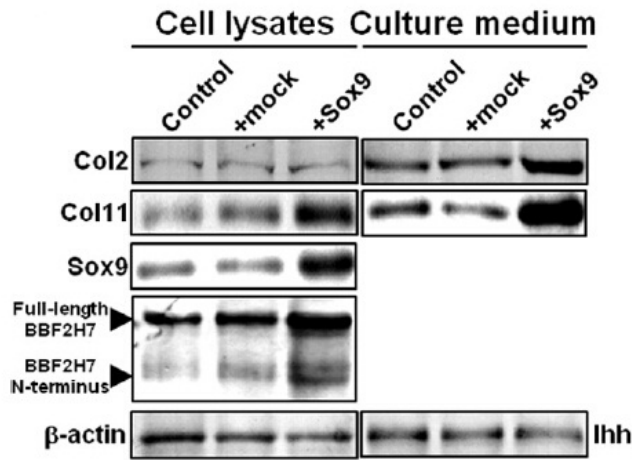
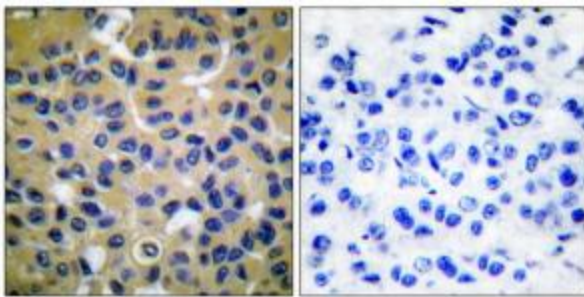
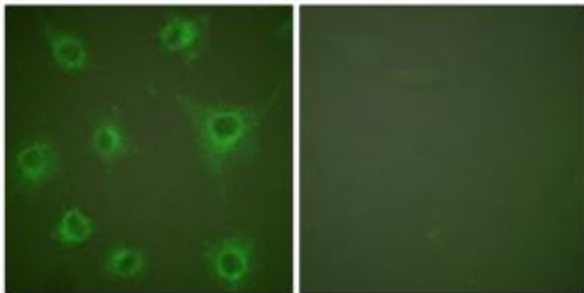


Figure from citation: Western Blot of COL11 protein level by using anti-COL11 antibody in primary cultured mice chondrocytes. Dilution: 1:500 [View Citation](#)



Immunohistochemical analysis of paraffin-embedded human breast carcinoma tissue using Collagen II antibody (#TA311649). The picture on the right is treated with the synthesized peptide.



Immunofluorescence analysis of COS7 cells using Collagen II antibody (#TA311649). The picture on the right is treated with the synthesized peptide.