

Product datasheet for **TA311648**

Oligodendrocyte Specific Protein (CLDN11) Rabbit Polyclonal Antibody

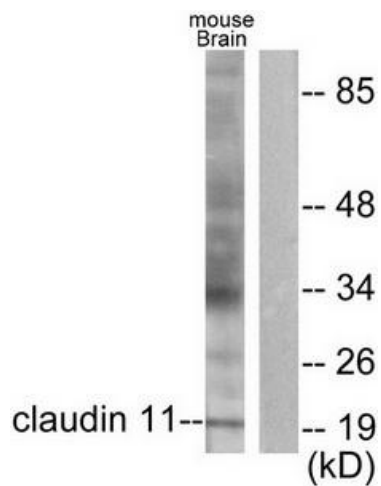
Product data:

Product Type:	Primary Antibodies
Applications:	WB
Recommended Dilution:	WB: 1:500~1:3000, ELISA: 1:1000
Reactivity:	Human, Mouse, Rat
Host:	Rabbit
Isotype:	IgG
Clonality:	Polyclonal
Immunogen:	The antiserum was produced against synthesized peptide derived from human Claudin 11.
Formulation:	Phosphate buffered saline (without Mg ²⁺ and Ca ²⁺), pH 7.4, 150mM NaCl, 0.02% sodium azide and 50% glycerol.
Concentration:	lot specific
Purification:	The antibody was affinity-purified from rabbit antiserum by affinity-chromatography using epitope-specific immunogen.
Conjugation:	Unconjugated
Storage:	Store at -20°C as received.
Stability:	Stable for 12 months from date of receipt.
Gene Name:	claudin 11
Database Link:	NP_001171985 Entrez Gene 18417 Mouse Entrez Gene 84588 Rat Entrez Gene 5010 Human O75508
Synonyms:	OSP; OTM
Note:	Claudin 11 antibody detects endogenous levels of total Claudin 11 protein.
Protein Families:	Transmembrane
Protein Pathways:	Cell adhesion molecules (CAMs), Leukocyte transendothelial migration, Tight junction



[View online »](#)

Product images:



Western blot analysis of extracts from mouse brain, using Claudin 11 antibody (#TA311648). The lane on the right is treated with the synthesized peptide.