

Product datasheet for **TA311643**

TGF beta Receptor II (TGFB2) Rabbit Polyclonal Antibody

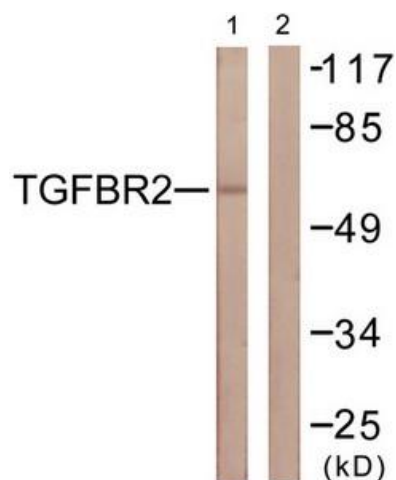
Product data:

Product Type:	Primary Antibodies
Applications:	IHC, WB
Recommended Dilution:	WB: 1:500~1:3000, IHC: 1:50~1:100, ELISA: 1:5000
Reactivity:	Human, Mouse
Host:	Rabbit
Isotype:	IgG
Clonality:	Polyclonal
Immunogen:	The antiserum was produced against synthesized non-phosphopeptide derived from human TGFB2 around the phosphorylation site of serine 250 (D-R-SP-D-I).
Formulation:	Phosphate buffered saline (without Mg ²⁺ and Ca ²⁺), pH 7.4, 150mM NaCl, 0.02% sodium azide and 50% glycerol.
Concentration:	lot specific
Purification:	The antibody was affinity-purified from rabbit antiserum by affinity-chromatography using epitope-specific immunogen.
Conjugation:	Unconjugated
Storage:	Store at -20°C as received.
Stability:	Stable for 12 months from date of receipt.
Gene Name:	transforming growth factor beta receptor 2
Database Link:	NP_001020018 Entrez Gene 21813 Mouse Entrez Gene 7048 Human P37173
Synonyms:	AAT3; FAA3; LDS1B; LDS2; LDS2B; MFS2; RIIC; TAAD2; TGFbeta-RII; TGFR-2
Note:	TGFB2 (Ab-250) antibody detects endogenous levels of total TGFB2 protein
Protein Families:	Druggable Genome, Protein Kinase, Transmembrane
Protein Pathways:	Adherens junction, Chronic myeloid leukemia, Colorectal cancer, Cytokine-cytokine receptor interaction, Endocytosis, MAPK signaling pathway, Pancreatic cancer, Pathways in cancer, TGF-beta signaling pathway

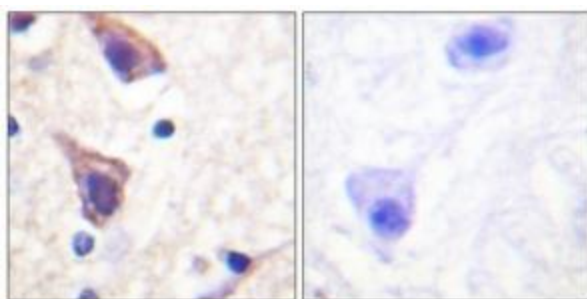


[View online »](#)

Product images:



Western blot analysis of extracts from NIH/3T3 cells, using TGFBR2 (Ab-250) antibody. The lane on the right is treated with the synthesized peptide.



Immunohistochemistry analysis of paraffin-embedded human brain tissue using TGFBR2 (Ab-250) antibody. The picture on the right is treated with the synthesized peptide.