

Product datasheet for **TA311642**

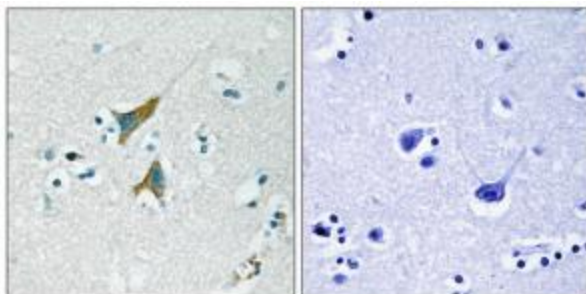
DUSP1 Rabbit Polyclonal Antibody

Product data:

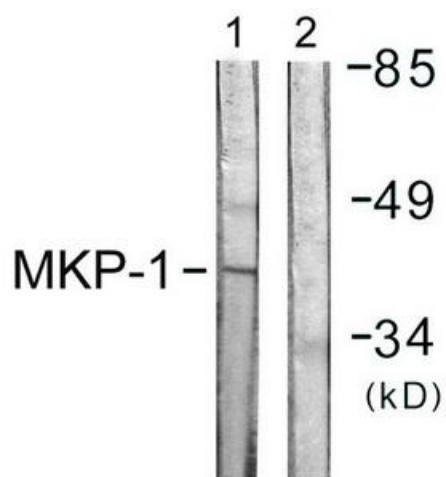
Product Type:	Primary Antibodies
Applications:	IHC, WB
Recommended Dilution:	WB: 1:500~1:3000, IHC: 1:50~1:100, ELISA: 1:5000
Reactivity:	Human, Mouse
Host:	Rabbit
Isotype:	IgG
Clonality:	Polyclonal
Immunogen:	The antiserum was produced against synthesized non-phosphopeptide derived from human MKP1 around the phosphorylation site of serine 359 (L-Q-SP-P-I).
Formulation:	Phosphate buffered saline (without Mg ²⁺ and Ca ²⁺), pH 7.4, 150mM NaCl, 0.02% sodium azide and 50% glycerol.
Concentration:	lot specific
Purification:	The antibody was affinity-purified from rabbit antiserum by affinity-chromatography using epitope-specific immunogen.
Conjugation:	Unconjugated
Storage:	Store at -20°C as received.
Stability:	Stable for 12 months from date of receipt.
Gene Name:	dual specificity phosphatase 1
Database Link:	NP_004408 Entrez Gene 19252 Mouse Entrez Gene 1843 Human P28562
Synonyms:	CL100; HVH1; MKP-1; MKP1; PTPN10
Note:	MKP1 (Ab-359) antibody detects endogenous levels of total MKP1 protein.
Protein Families:	Druggable Genome, Phosphatase
Protein Pathways:	MAPK signaling pathway



[View online »](#)

Product images:

Immunohistochemistry analysis of paraffin-embedded human lung carcinoma tissue using MKP1 (Ab-359) antibody. The picture on the right is treated with the synthesized peptide.



Western blot analysis of extracts from Jurkat cells, using MKP1 (Ab-359) antibody. The lane on the right is treated with the synthesized peptide.