

Product datasheet for **TA311640**

IL2 Receptor beta (IL2RB) Rabbit Polyclonal Antibody

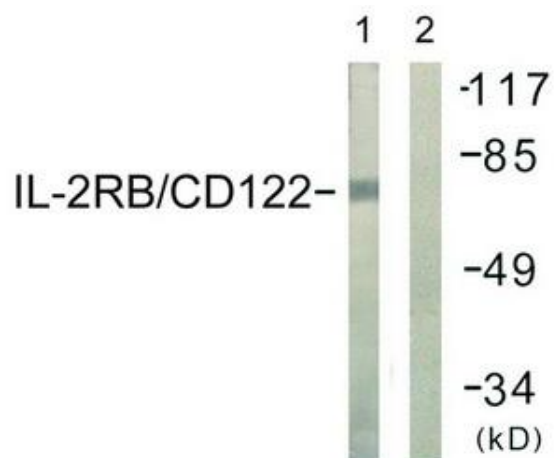
Product data:

Product Type:	Primary Antibodies
Applications:	IHC, WB
Recommended Dilution:	WB: 1:500~1:3000, IHC: 1:50~1:100, ELISA: 1:20000
Reactivity:	Human, Mouse
Host:	Rabbit
Isotype:	IgG
Clonality:	Polyclonal
Immunogen:	The antiserum was produced against synthesized non-phosphopeptide derived from human IL-2R β /CD122 around the phosphorylation site of tyrosine 364 (Q-G-YP-F-F)
Formulation:	Phosphate buffered saline (without Mg ²⁺ and Ca ²⁺), pH 7.4, 150mM NaCl, 0.02% sodium azide and 50% glycerol.
Concentration:	lot specific
Purification:	The antibody was affinity-purified from rabbit antiserum by affinity-chromatography using epitope-specific immunogen.
Conjugation:	Unconjugated
Storage:	Store at -20°C as received.
Stability:	Stable for 12 months from date of receipt.
Gene Name:	interleukin 2 receptor subunit beta
Database Link:	NP_000869 Entrez Gene 16185 Mouse Entrez Gene 3560 Human P14784
Synonyms:	CD122; IL15RB; P70-75
Note:	IL-2R./CD122 (Ab-364) antibody detects endogenous levels of total IL-2R./CD122 protein
Protein Families:	Druggable Genome, Transmembrane
Protein Pathways:	Cytokine-cytokine receptor interaction, Endocytosis, Jak-STAT signaling pathway

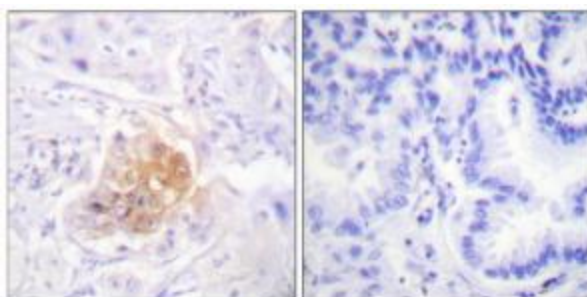


[View online »](#)

Product images:



Western blot analysis of extracts from COS7 cells, using IL-2R β /CD122 (Ab-364) antibody. The lane on the right is treated with the synthesized peptide.



Immunohistochemistry analysis of paraffin-embedded human lung carcinoma tissue using IL-2R β /CD122 (Ab-364) antibody. The picture on the right is treated with the synthesized peptide.