

Product datasheet for **TA311637**

14-3-3 zeta (YWHAZ) Rabbit Polyclonal Antibody

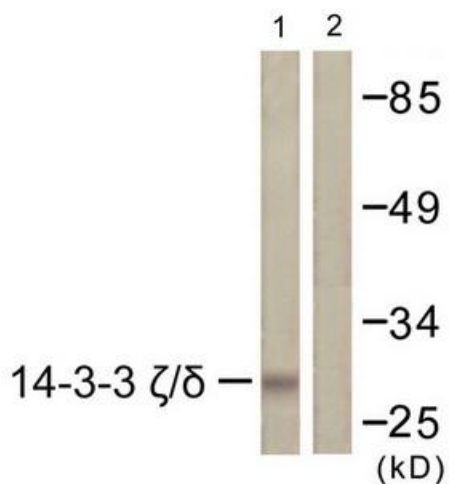
Product data:

Product Type:	Primary Antibodies
Applications:	IF, IHC, WB
Recommended Dilution:	WB: 1:500~1:3000, IHC: 1:50~1:100, IF: 1:100~1:500, ELISA: 1:10000
Reactivity:	Human, Mouse
Host:	Rabbit
Isotype:	IgG
Clonality:	Polyclonal
Immunogen:	The antiserum was produced against synthesized non-phosphopeptide derived from human 14-3-3 ζ around the phosphorylation site of threonine 232 (S-D-TP-Q-G)
Formulation:	Phosphate buffered saline (without Mg ²⁺ and Ca ²⁺), pH 7.4, 150mM NaCl, 0.02% sodium azide and 50% glycerol.
Concentration:	lot specific
Purification:	The antibody was affinity-purified from rabbit antiserum by affinity-chromatography using epitope-specific immunogen.
Conjugation:	Unconjugated
Storage:	Store at -20°C as received.
Stability:	Stable for 12 months from date of receipt.
Gene Name:	tyrosine 3-monooxygenase/tryptophan 5-monooxygenase activation protein zeta
Database Link:	NP_001129171 Entrez Gene 22631 Mouse Entrez Gene 7534 Human P63104
Synonyms:	14-3-3-zeta; HEL-S-3; HEL4; KCIP-1; YWHAD
Note:	14-3-3 antibody detects endogenous levels of total 14-3-3 protein
Protein Pathways:	Cell cycle, Neurotrophin signaling pathway, Oocyte meiosis, Pathogenic Escherichia coli infection

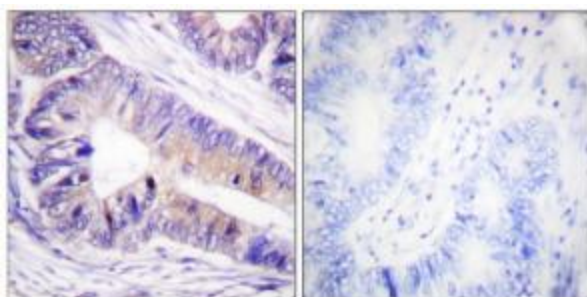


[View online »](#)

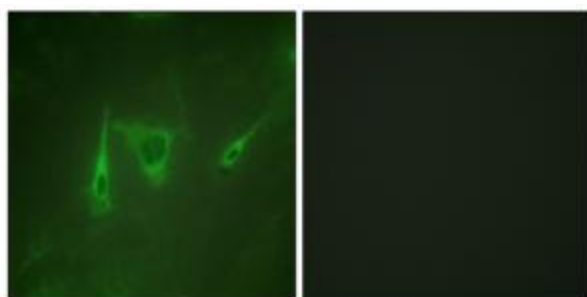
Product images:



Western blot analysis of extracts from K562 cells, using 14-3-3 ζ/d (Ab-232) antibody. The lane on the right is treated with the synthesized peptide.



Immunohistochemistry analysis of paraffin-embedded human colon carcinoma tissue using 14-3-3 ζ/d (Ab-232) antibody. The picture on the right is treated with the synthesized peptide.



Immunofluorescence analysis of NIH/3T3 cells, using 14-3-3 ζ/d (Ab-232) antibody. The picture on the right is treated with the synthesized peptide.