

## Product datasheet for **TA311635**

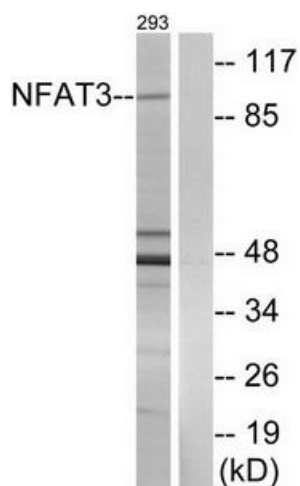
### NFATC4 Rabbit Polyclonal Antibody

#### Product data:

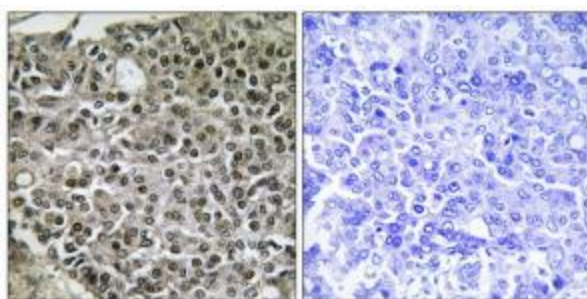
Product Type:	Primary Antibodies
Applications:	IHC, WB
Recommended Dilution:	WB: 1:500~1:3000, IHC: 1:50~1:100, IF: 1:100~1:500, ELISA: 1:5000
Reactivity:	Human, Mouse
Host:	Rabbit
Isotype:	IgG
Clonality:	Polyclonal
Immunogen:	The antiserum was produced against synthesized non-phosphopeptide derived from human NFAT3 around the phosphorylation site of serine 676 (K-R-SP-P-T).
Formulation:	Phosphate buffered saline (without Mg <sup>2+</sup> and Ca <sup>2+</sup> ), pH 7.4, 150mM NaCl, 0.02% sodium azide and 50% glycerol.
Concentration:	lot specific
Purification:	The antibody was affinity-purified from rabbit antiserum by affinity-chromatography using epitope-specific immunogen.
Conjugation:	Unconjugated
Storage:	Store at -20°C as received.
Stability:	Stable for 12 months from date of receipt.
Gene Name:	nuclear factor of activated T-cells 4
Database Link:	<a href="#">NP_001129494</a> <a href="#">Entrez Gene 73181 Mouse</a> <a href="#">Entrez Gene 4776 Human</a> <a href="#">Q14934</a>
Synonyms:	NF-AT3; NF-ATC4; NFAT3
Note:	NFAT3 (Ab-676) antibody detects endogenous levels of total NFAT3 protein.
Protein Families:	Druggable Genome, Transcription Factors
Protein Pathways:	Axon guidance, B cell receptor signaling pathway, MAPK signaling pathway, Natural killer cell mediated cytotoxicity, T cell receptor signaling pathway, VEGF signaling pathway, Wnt signaling pathway



[View online »](#)

**Product images:**

Western blot analysis of extracts from 293 cells, using NFAT3 (Ab-676) antibody. The lane on the right is treated with the synthesized peptide.



Immunohistochemistry analysis of paraffin-embedded human breast carcinoma tissue using NFAT3 (Ab-676) antibody. The picture on the right is treated with the synthesized peptide.